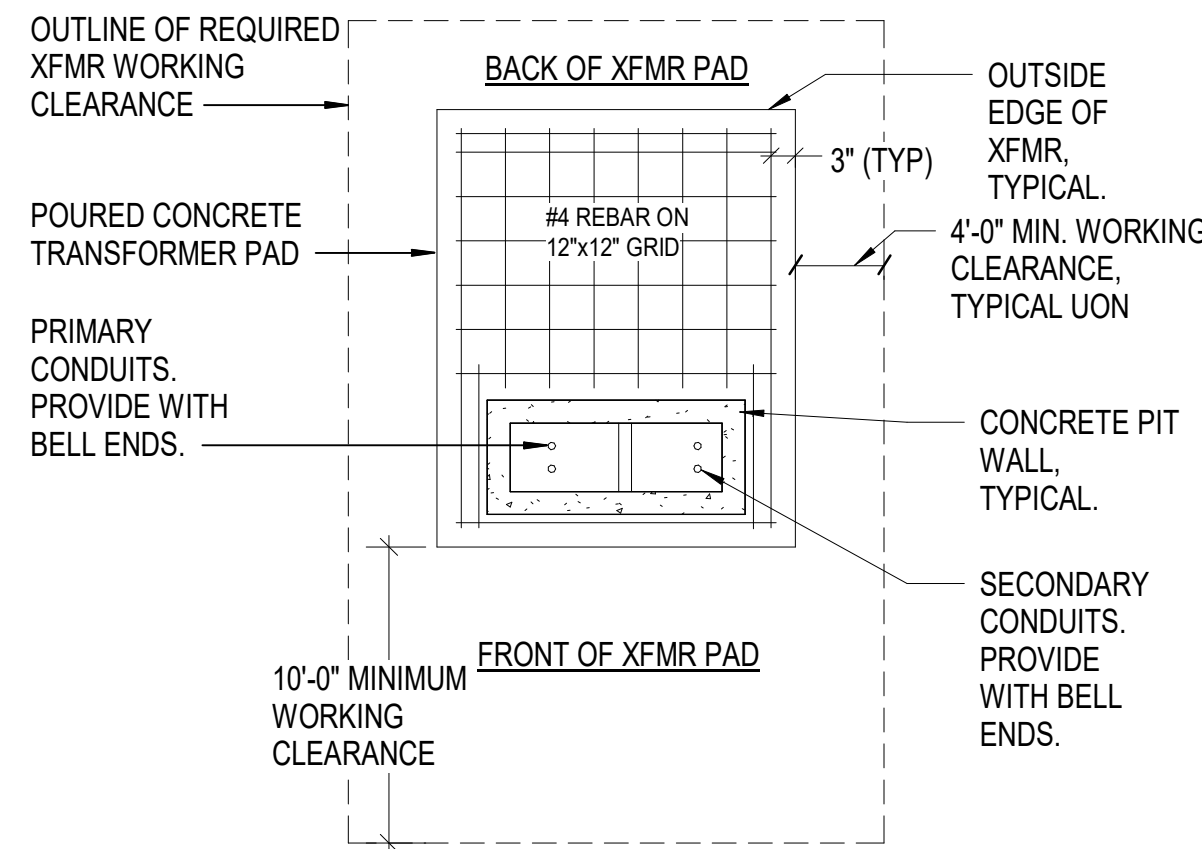


4/12/2019 2:11:48 PM
C:\new\Project\172_UNCW\Parking Deck II E17_Bentley.Dwg@clarknexus.com.vt

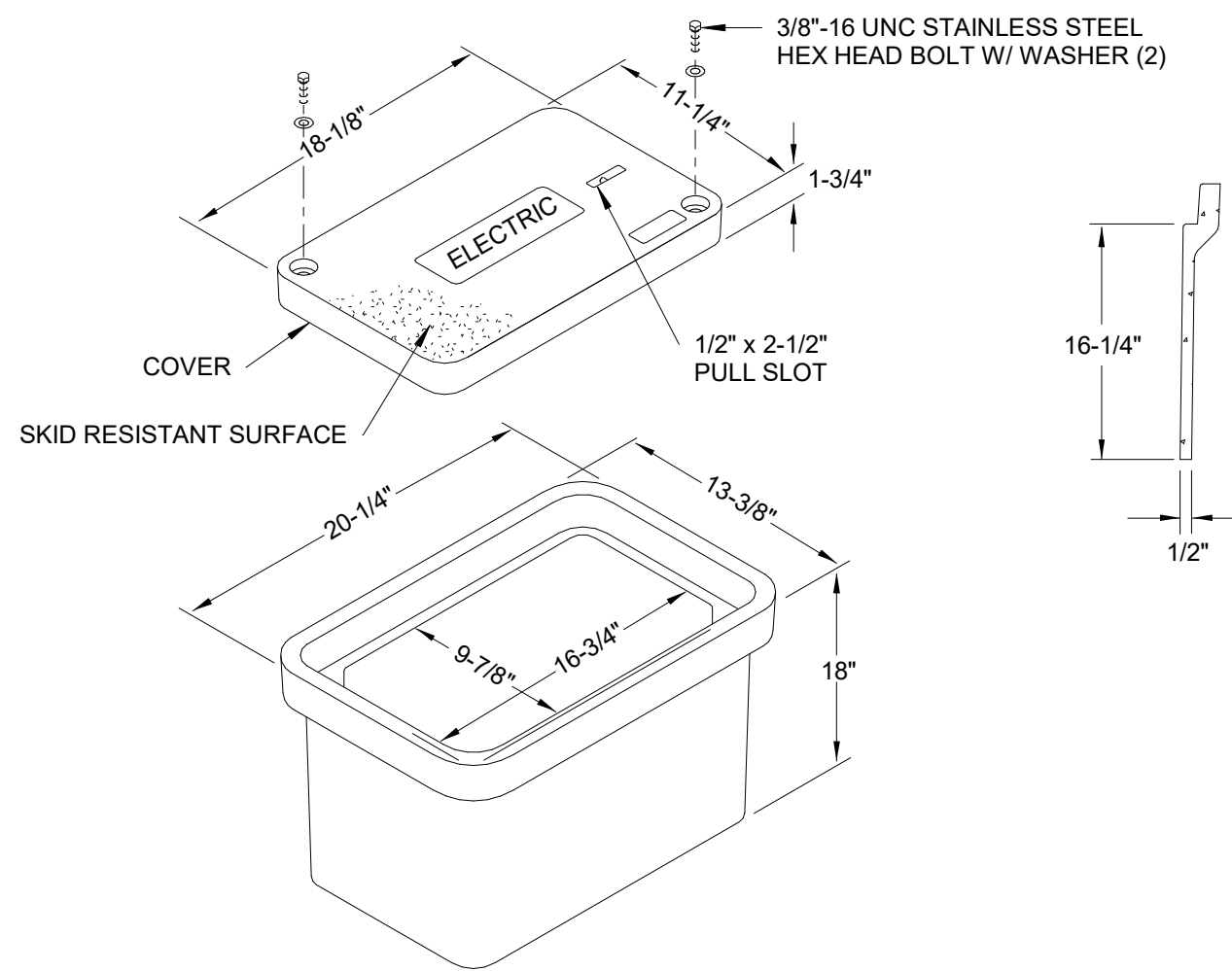
TRANSFORMER PAD INSTALLATION GENERAL NOTES

1. TRANSFORMER PADS SHALL BE INSTALLED IN A LOCATION TO REMAIN READILY ACCESSIBLE FOR LINE TRUCKS.
2. SOIL UNDERNEATH PADS SHALL BE FREE OF ROOTS AND OTHER ORGANIC MATERIALS AND BE THOROUGHLY TAMPED TO PREVENT WASHING. EXERCISE CARE IN BACKFILLING AND GRADING AROUND PAD.
3. SERVICE CONDUIT SHALL BE LOCATED IN THE EXTREME RIGHT SIDE OF THE SECONDARY COMPARTMENT.
4. ACTUAL PAD DIMENSIONS VARY. CONTRACTOR SHALL COORDINATE REQUIRED PAD DIMENSIONS WITH UTILITY COMPANY.



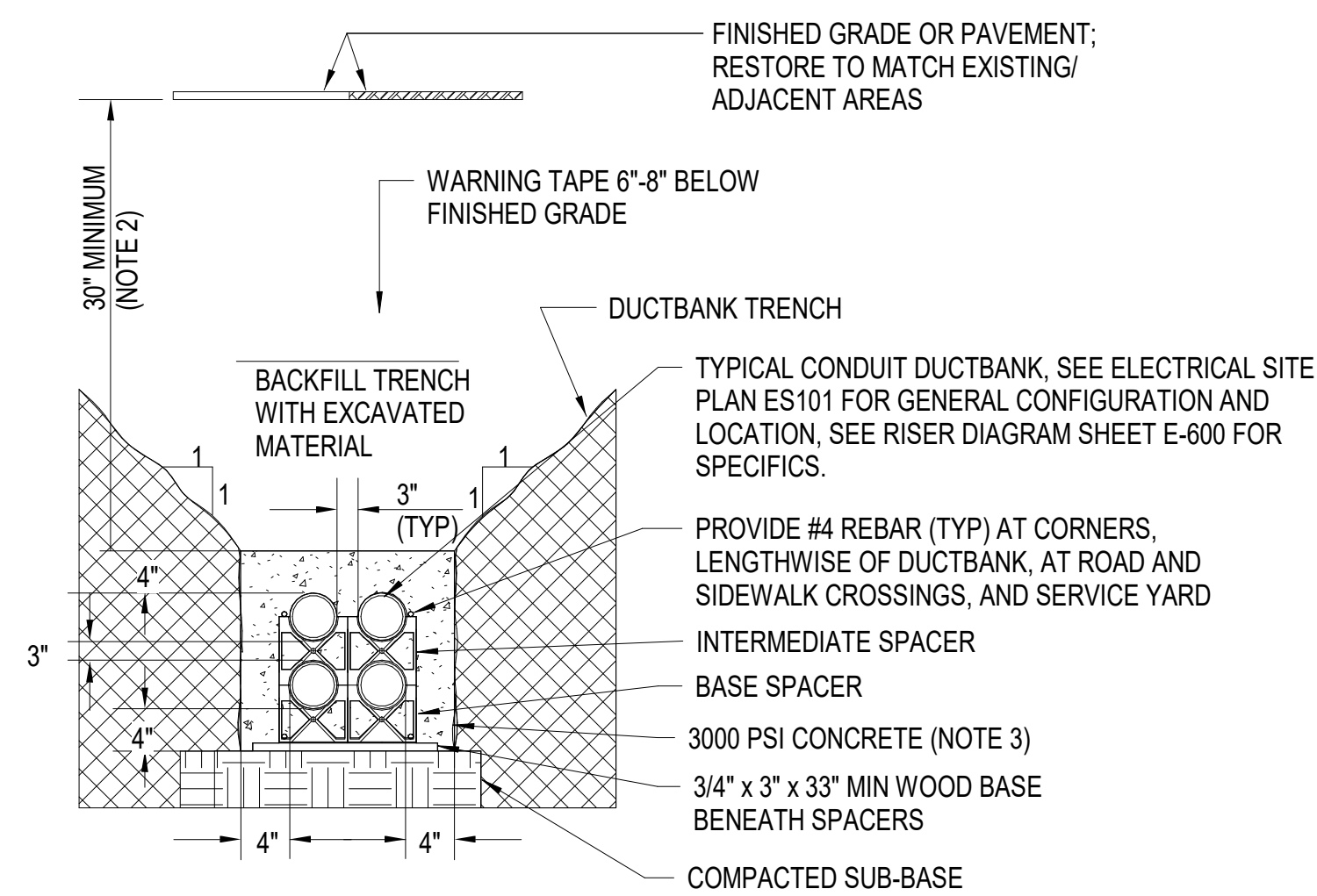
7 SERVICE TRANSFORMER PAD DETAIL PLAN (BY UTILITY COMPANY)

NO SCALE



5 HANDHOLE DETAIL

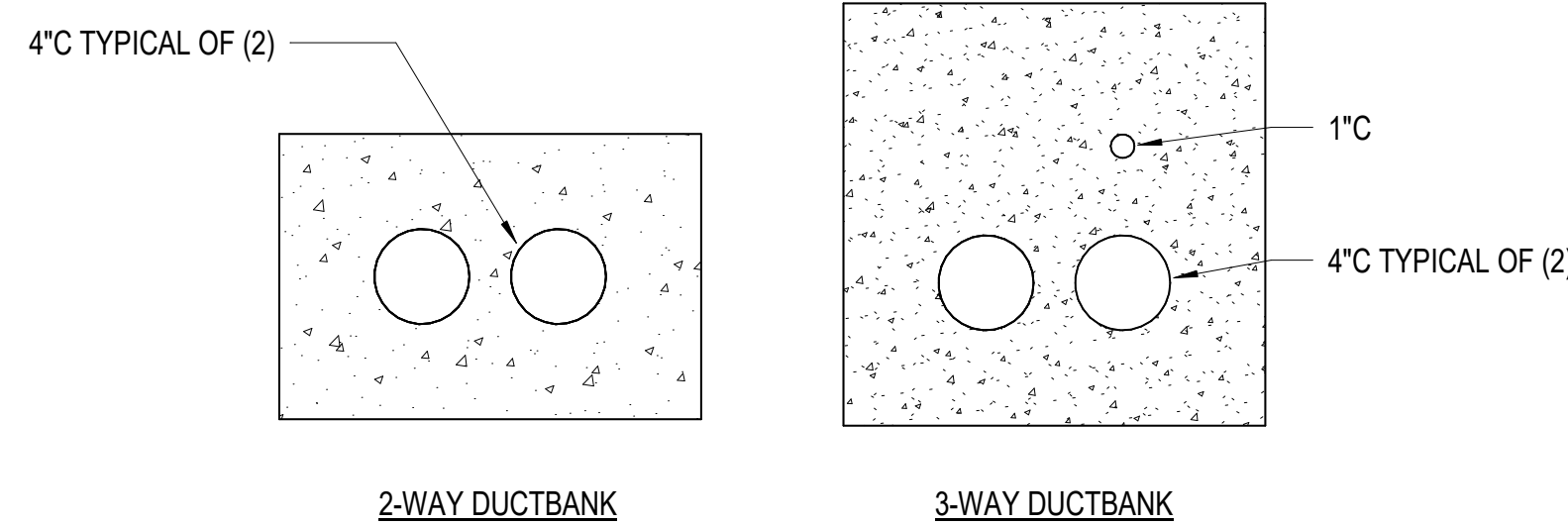
NO SCALE



- NOTES:
1. DIMENSIONS ARE TYPICAL. SEE DETAIL 2 THIS SHEET, FOR CONDUIT ARRANGEMENT REQUIREMENTS WITHIN DUCTBANK
 2. MINIMUM EARTH COVERAGE SHALL BE 18-INCHES FOR DUCTBANKS CARRYING CIRCUITS 600V OR LESS.
 3. CONDUIT SHALL BE MINIMUM 4" SCHEDULE 40 PVC, UON. USE SCHEDULE 80 PVC FOR INSTALLATION UNDER ROADS AND HEAVY TRAFFIC AREAS.

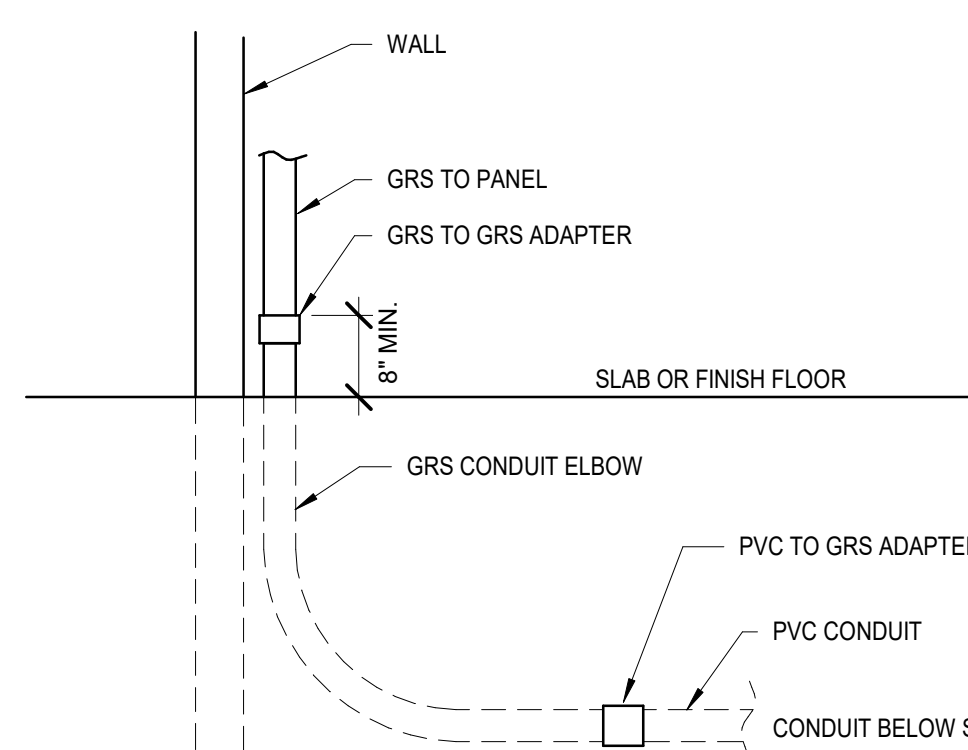
1 TYPICAL CONCRETE ENCASED DUCTBANK DETAIL

NO SCALE



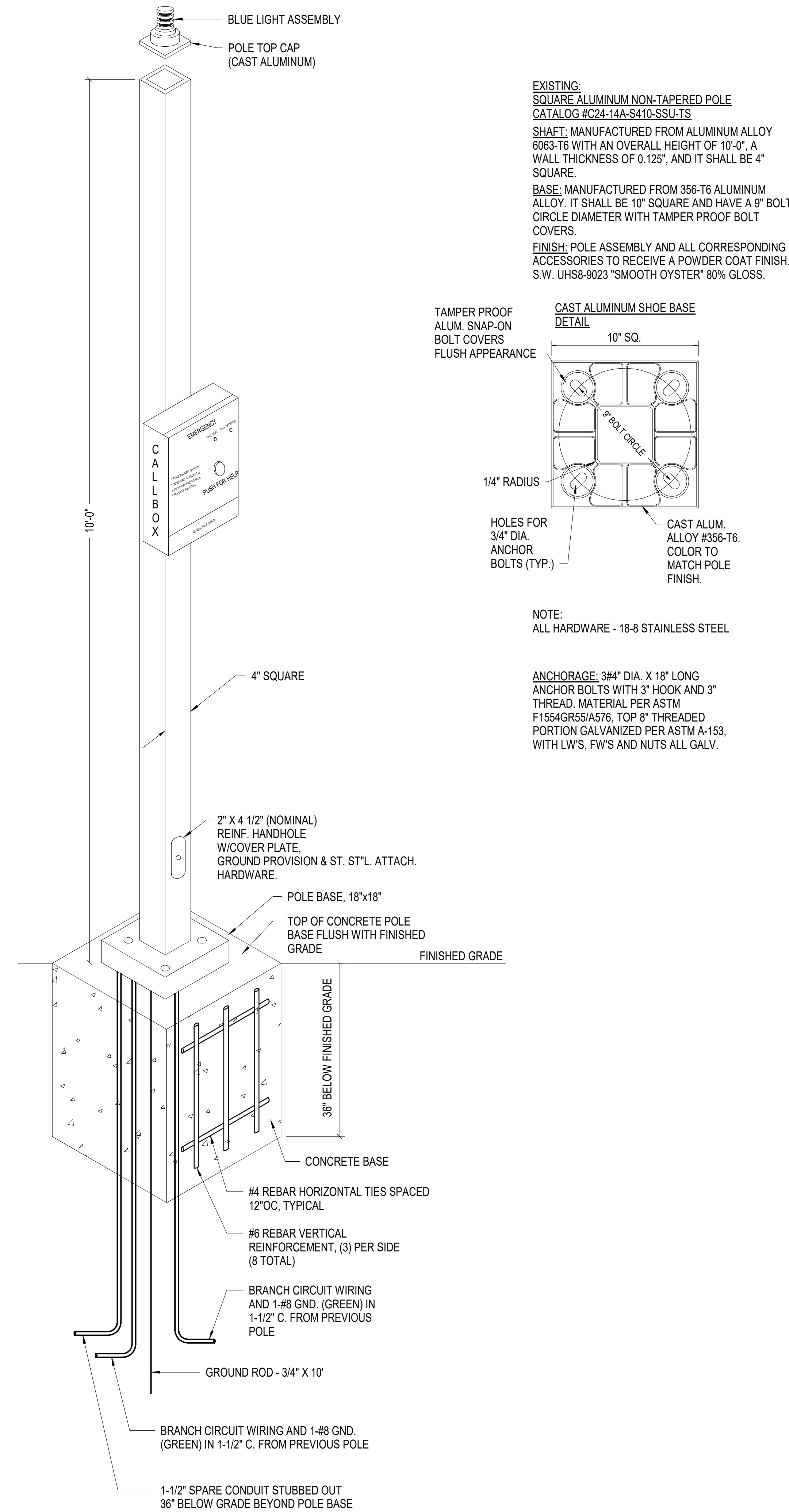
2 DUCTBANK CONFIGURATION DETAILS

NO SCALE



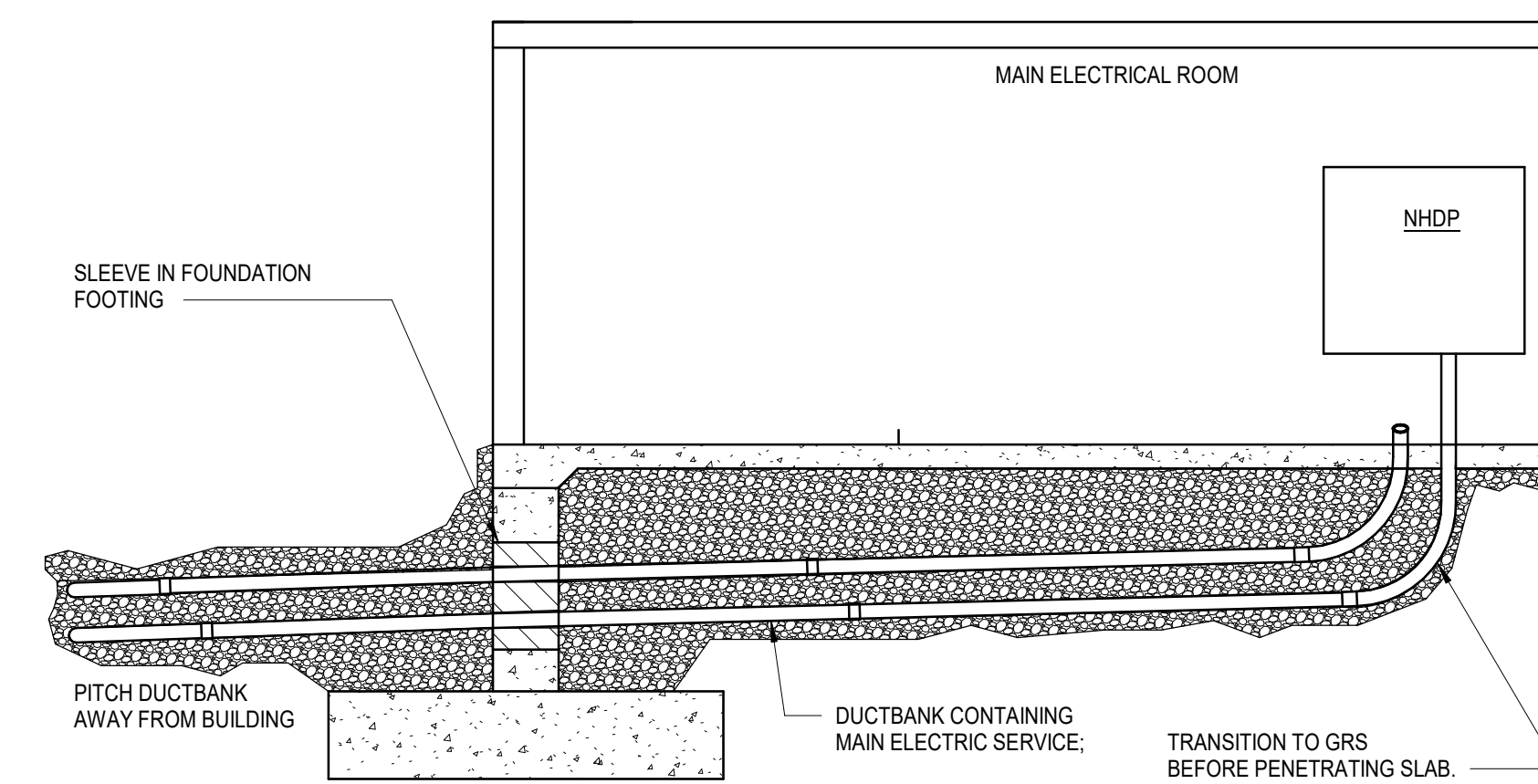
3 CONDUIT TRANSITION DETAIL (THROUGH SLAB)

NO SCALE



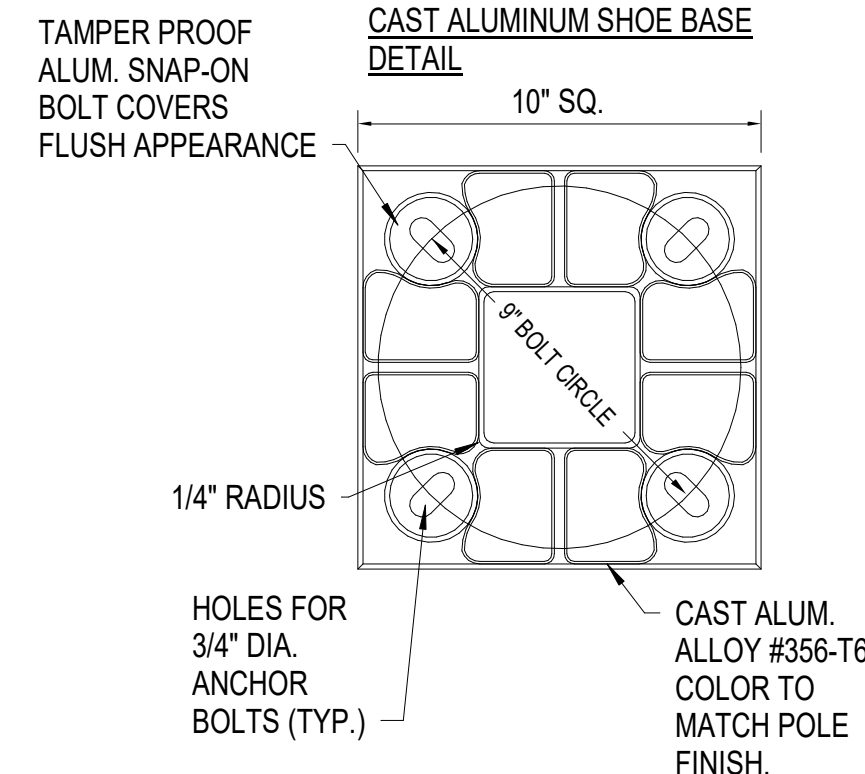
6 EMERGENCY PHONE DETAIL (FOR EXISTING RELOCATED PHONES)

NO SCALE



4 SECONDARY DUCTBANK ENTRY INTO GARAGE

NO SCALE



NOTE:
ALL HARDWARE - 18-8 STAINLESS STEEL

ANCHORAGE: 3/4" DIA. X 18" LONG
ANCHOR BOLTS WITH 3" HOOK AND 3" THREAD. MATERIAL PER ASTM F1554GR5/A576. TOP 8" THREADED PORTION GALVANIZED PER ASTM A-153, WITH LWS, FWS AND NUTS ALL GALV.

SCO ID NUMBER: 18-19226-01A
CODE: 41828
ITEM: 301

CONTRACTOR
Balfour Beatty
Construction

DESIGNER

CLARK NEXSEN
1523 ELIZABETH AVENUE, SUITE 300
CHARLOTTE, NORTH CAROLINA 28204
704-377-8800

CLARK NEXSEN LICENSE NUMBER: C-1028

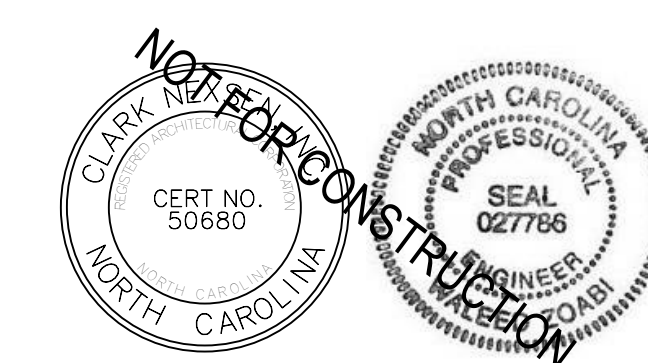
WALKER
CONSULTANTS

13860 Ballantyne Corporate Place
Suite 140
Charlotte, NC 28277
T: 704.247.6230
www.walkerconsultants.com
NC License No. F-0518

MCKIM & CREED

CIVIL ENGINEER
243 NORTH FRONT STREET
WILMINGTON, NORTH CAROLINA
28401
910.343.1048

PROFESSIONAL SEAL



NC CORPORATE ENGINEERING LICENSE #C-1028

SUBMITTAL

04/15/2019

CONSTRUCTION DOCUMENT
SUBMITTAL 01

REVISIONS

NO.	DESCRIPTION

KEY PLAN

SHEET

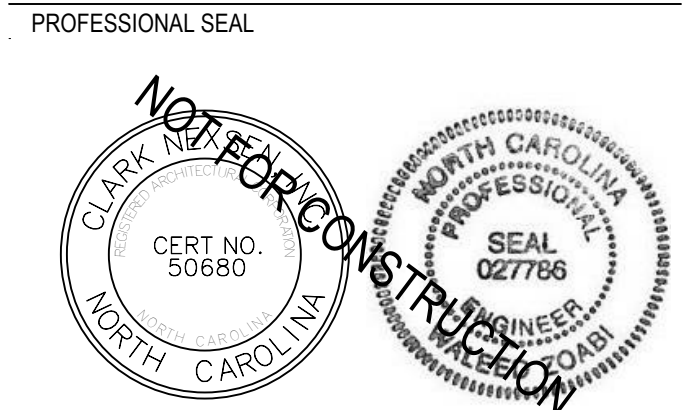
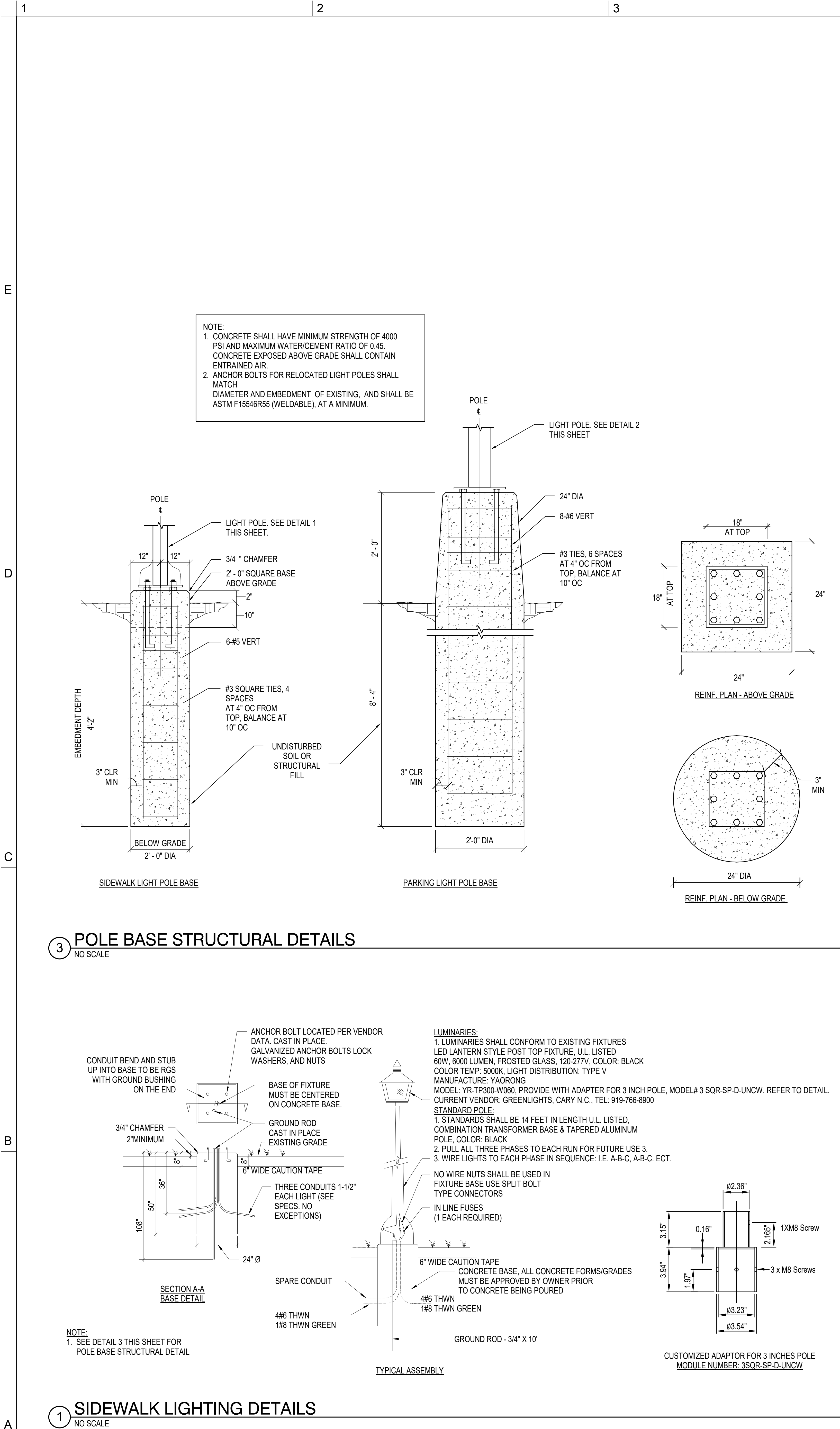
ELECTRICAL SITE DETAILS

ES501

DESIGN: WAZ
DRAWN: KAW
REVIEW: WAZ

CN 8112

4/12/2019 2:11:50 PM
C:\revit\Projects\172_UNCW\Parking Deck II E17_Bentley.Dwg\Bentley@clarknexus.com.rvt



NC CORPORATE ENGINEERING LICENSE #C-1028

SUBMITTAL
04/15/2019
CONSTRUCTION DOCUMENT
SUBMITTAL 01

REVISIONS

KEY PLAN

SHEET
ELECTRICAL SITE DETAILS

ES502

4/12/2019 2:11:34 PM C:\new\Project\12_UNCW\Parking Deck II E17_Bentley.Dwg\Bentley@clarknexus.com.plt

1
E
D
C
B
A

2
B

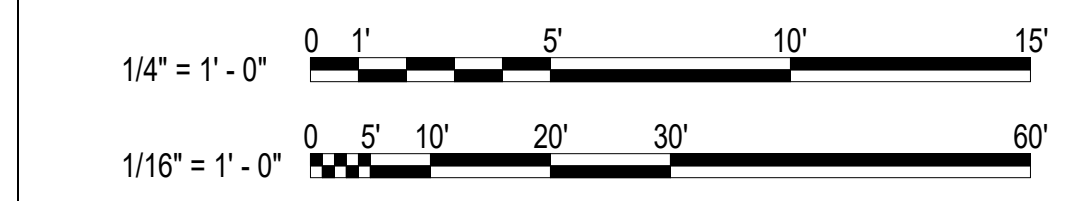
3

4

- GENERAL NOTES**
1. PROVIDE EMERGENCY LIGHTING AND SIGNAGE AS REQUIRED BY LOCAL CODES TO ILLUMINATE AND IDENTIFY EGRESS PATHS UTILIZING THE CENTRAL LIGHTING INVERTER. WIRING FROM EMERGENCY SOURCE DISTRIBUTION OVERCURRENT PROTECTION TO EMERGENCY LOADS SHALL BE KEPT ENTIRELY INDEPENDENT OF ALL OTHER WIRING AND EQUIPMENT AND SHALL NOT ENTER THE SAME RACEWAY, CABLE BOX OR CABINET WITH OTHER WIRING.
 2. CONDUITS ARE TO BE LOCATED IN THE GARAGE INTERIOR TO MINIMIZE VISUAL IMPACT. DO NOT ROUTE CONDUITS ON THE EXTERIOR OF ANY PART OF THE STRUCTURE. FIXTURES LOCATED ON THE EXTERIOR OF THE STRUCTURE ARE TO BE FED FROM BEHIND WITH NO CONDUIT VISIBLE FROM THE OUTSIDE.
 3. ALL RECEPTACLES SHALL BE GFI TYPE, UNLESS OTHERWISE NOTED. ALL RECEPTACLES EXCEPT THOSE IN ENCLOSED ROOMS SHALL HAVE WEATHERPROOF WHILE-IN-USE COVERS.

- NOTES**
1. ELEVATION MOTOR FUSED DISCONNECT. FUSE PER MANUFACTURER'S RECOMMENDATION. REFER TO RISER DIAGRAM E-600 FOR ADDITIONAL INFORMATION. DISCONNECT SHALL BE LOCKABLE IN THE OPEN POSITION.
 2. ELEVATOR CAB LIGHT AND CONTROL FUSED DISCONNECT. PROVIDE 120V, 30A, 20A FUSE LOCKABLE IN THE OPEN POSITION.
 3. PROVIDE (1) VOICE LINE FOR EACH ELEVATOR. FIELD COORDINATE SPECIFICS AND FINAL LOCATION WITH ELEVATOR SUPPLIER.
 4. SUMP PUMP CONTROLLER. COORDINATE LOCATION WITH SUMP PUMP SUPPLIER.
 5. PROVIDE NEMA L6-20R, 208V, TWIST-LOCK STYLE RECEPTACLE. LOCATE BELOW THE PROPOSED TELECOMMUNICATIONS CABINET. REFER TO DRAWING E-600 FOR CABINET REQUIREMENTS.
 6. PROVIDE NEMA-5-20R, 120V, 20A, RECEPTACLE. LOCATE BELOW THE PROPOSED WALL MOUNT TELECOMMUNICATIONS CABINET. REFER TO DRAWING E-600 FOR CABINET REQUIREMENTS.
 7. VOICE LINE FOR FIRE ALARM DIGITAL COMMUNICATOR. COORDINATE SPECIFICS WITH FIRE ALARM SYSTEM SUPPLIER.
 8. CONNECT TO STAIR LUMINAIRE ON TIER ABOVE.
 9. CONNECT TO STAIR LUMINAIRE ON TIER ABOVE AND TIER BELOW.
 10. CONNECT TO STAIR LUMINAIRE ON TIER BELOW.
 11. (2) 4" INCOMING TELECOM CONDUITS FROM MANHOLE MH-14A5. REFER TO DRAWING ES101 FOR CONTINUATION.
 12. REFER TO LUMINAIRE SCHEDULE FOR MOUNTING SPECIFICS OF LUMINAIRE LOCATED AT TOP OF ELEVATOR SHAFT.
 13. PROVIDE CONNECTION TO EMERGENCY PHONE. EXTEND 2#12, 1#12, 3/4" C FROM RECEPTACLE JUNCTION BOX TO BUTTON OF CALL BOX.
 14. DAYLIGHT SENSOR FOR DAYLIGHT HARVESTING. PROVIDE ONE SENSOR PER STAIR TOWER AND CONNECT TO FOUR (3) TYPE C2 AND (1) TYPE C LUMINAIRES ON EACH TIER AND (2) TYPE C2 AND (2) TYPE C LUMINAIRES ON THE TOP TIER FIFTH LEVEL. LOCATE SENSOR ON GROUND TIER LEVEL PER MANUFACTURER RECOMMENDATIONS. DO NOT CONNECT LAMINAR TYPE C2 AT THE STAIR LOWER LANDING TO THE DAYLIGHT SENSOR.
 15. COORDINATE ANCHOR BOLT PATTERN OF POLE WITH DECK MANUFACTURER PRIOR TO ORDERING POLE. COORDINATE DRILL PATTERN AND BOLT PATTERN OF LUMINAIRE MOUNT WITH POLE MANUFACTURER PRIOR TO ORDERING POLE.
 16. BOND LIGHT POLE WITH #4 BARE COPPER WIRE TO BASE OF COLUMN'S VERTICAL REINFORCING BARS (IF NOT LESS THAN 1/2" IN DIAMETER), INSTALLED IN MULTIPLE PIECES AND CONNECTED TOGETHER BY THE USUAL STEEL TIE WIRES, WELDING, EXOTHERMIC WELDING, OR OTHER EFFECTIVE MEANS TO CREATE A CONTINUOUS PATH TO EARTH.
 17. COORDINATE STEEL VERTICAL REINFORCING BAR CONNECTION TO ENSURE CONTINUOUS PATH TO EARTH WITH CONTRACTOR PRIOR TO CONCRETE IS POURED FOR EACH LIGHT POLE LOCATION.
 18. PROVIDE CONNECTION TO HEATED BACKFLOW AND IRRIGATION ENCLOSURE, IRRIGATION CONTROLLER, AND ASSOCIATED HEAT TRACING. COORDINATE CONNECTION REQUIREMENT WITH EQUIPMENT INSTALLER. REFER TO SITE DRAWINGS CG100 AND PLUMBING DRAWINGS P101 AND P201 FOR LOCATION.
 19. CONNECT LUMINAIRE A HEAD OF LOCAL CONTROL.
 20. GROUND TRIAD, LOCATE MINIMUM 5' FROM BUILDING. EXTEND 1-1/4" C FROM GROUND TEST WELL TO MAIN GROUND ROD LOCATED IN THE ELECTRICAL ROOM 1104 (MGB). INSTALL CONDUIT MINIMUM 30" BELOW FINISHED GRADE. REFER TO DETAILS 1 AND 2 DRAWING E-500 FOR ADDITIONAL REQUIREMENT.
 21. PHOTOCCELL FOR BRANCH CIRCUITS VIA LIGHTING CONTACTOR LC1. MOUNT PHOTOCCELL UNDER ROOF EAVE OF STAIR TOWER. ORIENT FACING NORTH.
 22. MOUNT A COPY OF THE ELECTRICAL POWER RISER DIAGRAM, UNDER CLEAR PROTECTIVE MATERIAL AT THIS LOCATION.
 23. PROVIDE NEMA1 SCREW-OVER WIREWAY, 8" WIDE X 8" HIGH X 36" LONG FOR SITE LIGHTING UNDERGROUND CONDUIT TERMINATIONS. MOUNT 24" AFF.
 24. TYPE J1 AND J2 CONNECTED VIA LIGHTING CONTACTOR LC1 LUMINAIRES SHALL NOT BE PROVIDED WITH INTEGRAL PHOTOCCELL. REFER TO LUMINAIRE SCHEDULE'S NOTES.
 25. MOUNT LUMINAIRE AT 17' AFF TO CENTER. COORDINATE LOCATION WITH ARCHITECTURAL DRAWINGS. REFER TO LUMINAIRE SCHEDULE FOR ADDITIONAL INFORMATION.
 26. JUNCTION BOXES FOR FUTURE ELECTRIC VEHICLE CHARGER. REFER TO SYMBOL LEGEND FOR ADDITIONAL INFORMATION. TYPICAL FOR SECOND AND THIRD LEVELS ONLY.
 27. PROVIDE TWO-GANG JUNCTION BOX FOR CONNECTION TO VEHICLE COUNTING SENSORS. EXTEND LOW VOLTAGE CABLE 1" CONDUIT TO EACH SENSOR AND MAKE CONNECTIONS. COORDINATE LOCATION WITH STRUCTURAL DRAWINGS AG401 AND AG402 AND SYSTEM VENDOR.
 28. PROVIDE TWO-GANG JUNCTION BOX FOR CONNECTION TO LIGHTED SIGNS HANGING FROM BOTTOM OF DOUBLE TEES OVER EACH LANE (GREEN ARROW / X) AND EXTERIOR LIGHTED SIGNS, (ENTER/ EXIT) OVER EACH LANE. COORDINATE SIGNAGE LOCATION WITH STRUCTURAL DRAWINGS, AG401 AND AG402 AND SYSTEM VENDOR. EXTEND LOW VOLTAGE CABLE IN 1" CONDUIT TO EACH SIGN.
 29. PROVIDE TWO-GANG JUNCTION BOX FOR CONNECTION TO LIGHTED SIGNS HANGING FROM BOTTOM OF DOUBLE TEES OVER EACH LANE (GREEN ARROW / X). COORDINATE SIGNAGE LOCATION WITH STRUCTURAL DRAWINGS, AG401 AND AG402 AND SYSTEM VENDOR. EXTEND LOW VOLTAGE CABLE IN 1" CONDUIT TO EACH SIGN.
 30. REFER TO DETAIL 9 DRAWING E-500 FOR POWER AND DATA REQUIREMENTS.
 31. EXTEND (1) 1" CONDUIT UNDERGROUND FROM WEATHERPROOF JUNCTION BOX TO ELECTRICAL ROOM PANEL 1N1 SECTION II FOR FUTURE GATE AND TERMINATE AT BOTH ENDS. MOUNT JUNCTION BOX 12" AFF PROVIDE WEATHERPROOF COVER PLATE AND LABEL.
 32. EXTEND (1) 1-1/2" CONDUIT UNDERGROUND FROM WEATHERPROOF JUNCTION BOX TO TELECOM ROOM EAST WALL FOR FUTURE GATE. MOUNT JUNCTION BOX 10" AFF. PROVIDE WEATHERPROOF COVER PLATE AND LABEL. STUB-UP CONDUIT IN TELECOM ROOM 10" AFF.
 33. REFER TO ARCHITECTURAL CURTAIN WALL DETAIL DRAWING FOR EXIT SIGN MOUNTING LOCATION.
 34. EXTEND (1) 1" CONDUIT FOR POWER AND (1) 1" CONDUIT FOR DATA, SAME AS NOTES 31 AND 32 EXCEPT FOR FUTURE PAY BY SPACE MACHINE. COORDINATE FINAL LOCATION WITH UNOW PRIOR TO INSTALLATION.
 35. PROVIDE HEAVY DUTY NEMA 4X, 240 V, 30 AMP NON-FUSED DISCONNECT FOR BOOSTER PUMP. EXTEND 3#8, 1#8 G, 1" CONDUIT UNDERGROUND FROM DISCONNECT TO PANEL 1N1 SECTION II TO CIRCUIT INDICATED, AND EXTEND 3#12, 1#12 G, 3/4" CONDUIT FROM DISCONNECT TO PUMP AND MAKE CONNECTIONS. PUMP HEATED ENCLOSURE SHALL BE CONNECTED TO THE BACKFLOW HEATED ENCLOSURE CIRCUIT 1N1-12 AT THIS LOCATION. REFER TO KEY NOTE 18 FOR ADDITIONAL INFORMATION.
 36. MOUNT RECEPTACLE 12" AFF IN REAR WALL.
 37. PROVIDE SUPPORT STRUCTURE FOR THE STROBE / LOCATOR LIGHT TO BE MOUNTED 96" AFF.

GRAPHIC SCALE(S)



UNIVERSITY of NORTH CAROLINA WILMINGTON
601 S COLLEGE ROAD
WILMINGTON, NORTH CAROLINA 28403
PARKING DECK II AND SURFACE
PARKING (DESIGN-BUILD)
SOUTH CAMPUS - 4965 RIEGEL ROAD

SCO ID NUMBER: 18-19226-01A
CODE: 41828
ITEM: 301

CONTRACTOR
Balfour Beatty Construction

DESIGNER
CLARK NEXSEN
1523 ELIZABETH AVENUE, SUITE 300
CHARLOTTE, NORTH CAROLINA 28204
704-377-8800
CLARK NEXSEN LICENSE NUMBER: C-1028

WALKER CONSULTANTS
13860 Ballantyne Corporate Place
Suite 140
Charlotte, NC 28277
T: 704.247.6230
www.walkerconsultants.com
NC License No. F-0518

MCKIM & CREED
CIVIL ENGINEER
243 NORTH FRONT STREET
WILMINGTON, NORTH CAROLINA 28401
910.343.1048

PROFESSIONAL SEAL

NC CORPORATE ENGINEERING LICENSE #C-1028

SUBMITTAL
04/15/2019
**CONSTRUCTION DOCUMENT
SUBMITTAL 01**

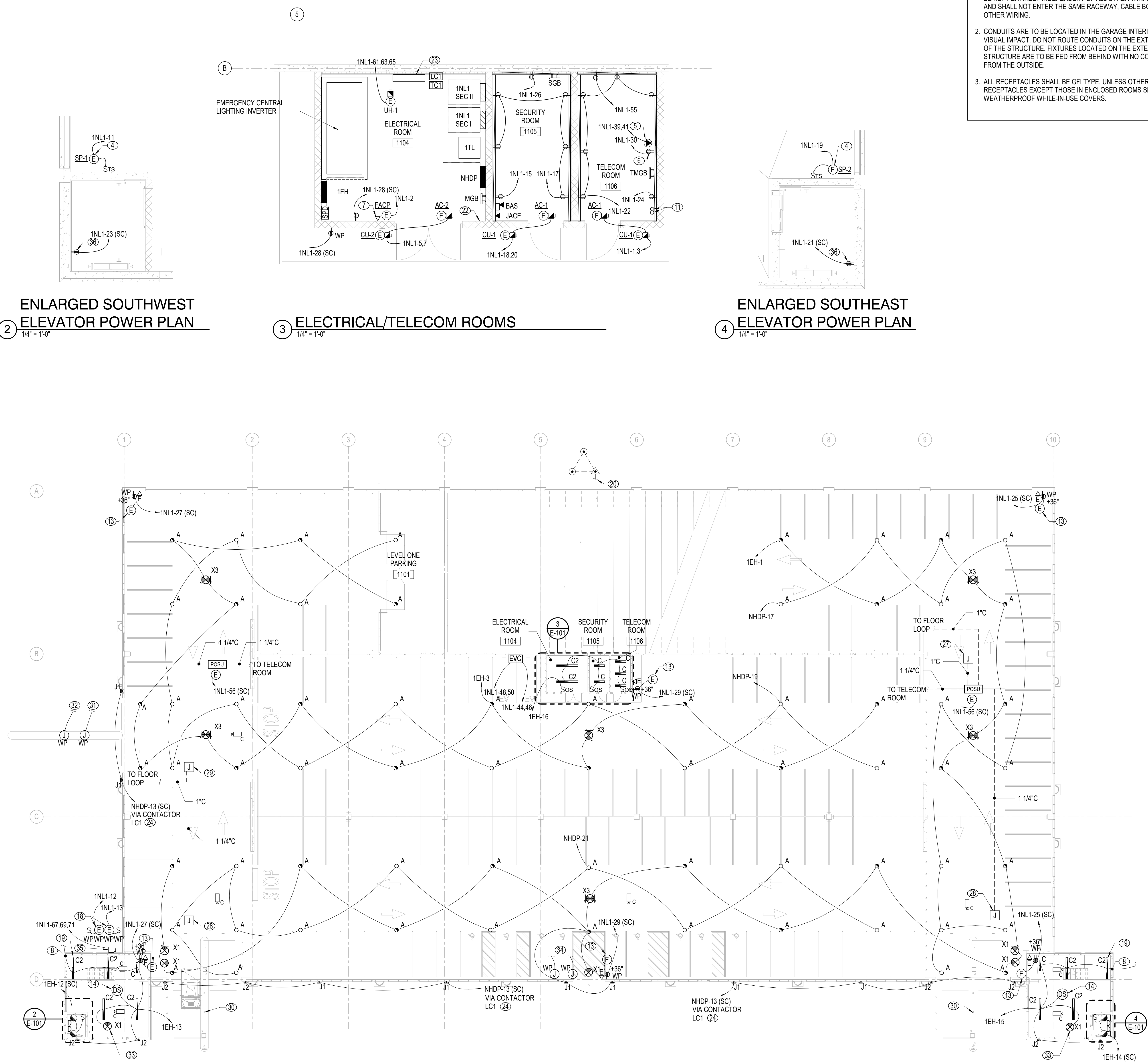
REVISIONS

KEY PLAN

SHEET
**FIRST LEVEL - LIGHTING,
POWER AND SYSTEMS PLAN**

DESIGN: JE
DRAWN: KAW
REVIEW: WAZ

CN 8112



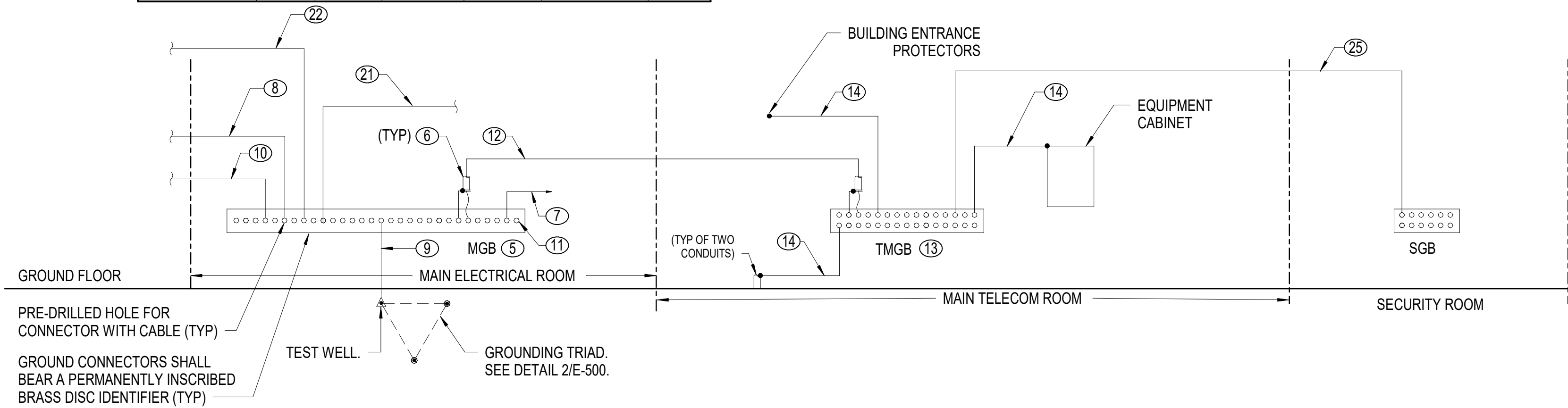
**ENLARGED SOUTHWEST
ELEVATOR POWER PLAN**
1/4" = 1'-0"

ELECTRICAL/TELECOM ROOMS
1/4" = 1'-0"

**ENLARGED SOUTHEAST
ELEVATOR POWER PLAN**
1/4" = 1'-0"

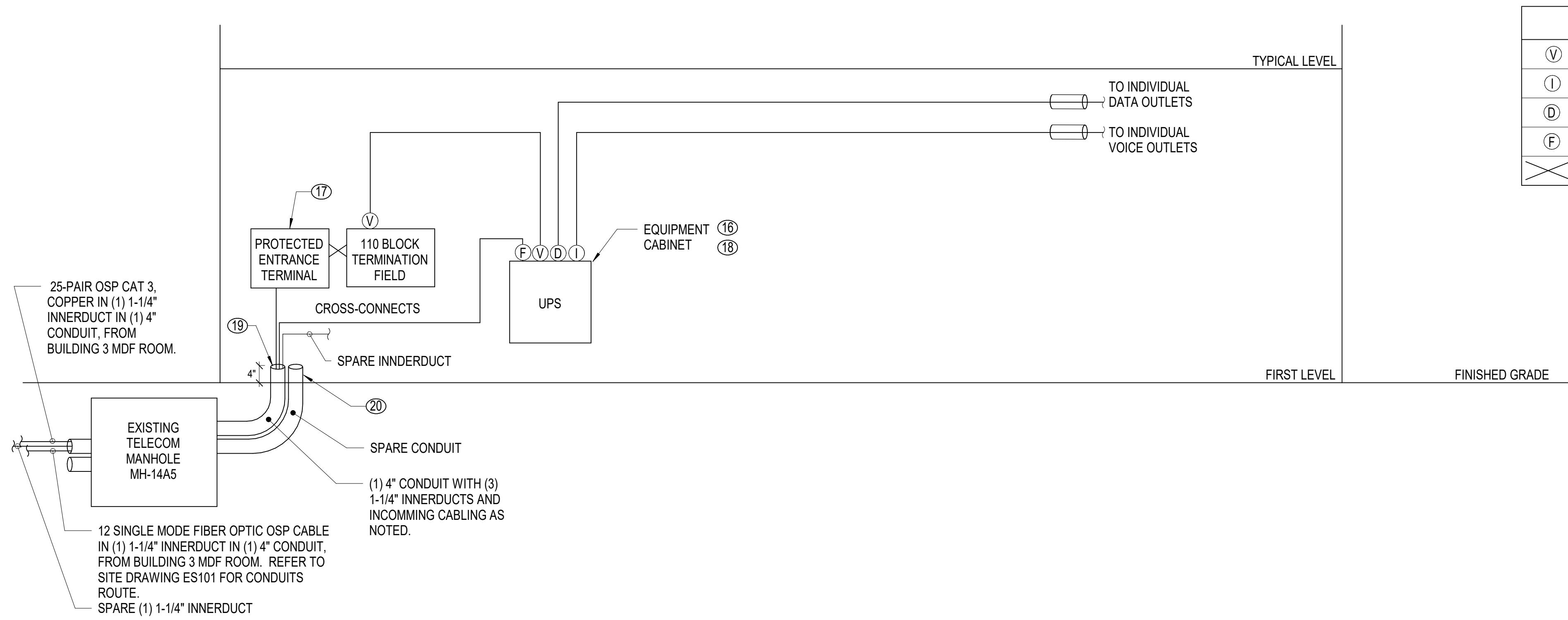
FIRST LEVEL - LIGHTING, POWER, AND SYSTEMS PLAN
1/16" = 1'-0"

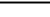




FEEDER SCHEDULE						
DESIGNATION	NO. OF SETS	CONDUCTORS			CONDUIT	NOTES
		PHASE	NEUTRAL	GROUND		
40	1	3#8	1#8	#8	1"	COPPER
40BS	1	3#6	1#6	#8	1"	COPPER
40VD	1	3#6	1#6	#8	1"	COPPER
50B	1	3#4	1#4	#8	1-1/4"	COPPER
110D	1	3#1	-	1#6	1-1/4"	COPPER
150Y	1	3#10	1#10	1#6	1-1/2"	COPPER
250TS	1	3-250 KCMIL	1-250 KCMIL	1#2	3"	COPPER
250US	1	3-300 KCMIL	1-300 KCMIL	-	4" (1-4" SPARE)	COPPER



3 POWER & TELECOM GROUNDING RISER

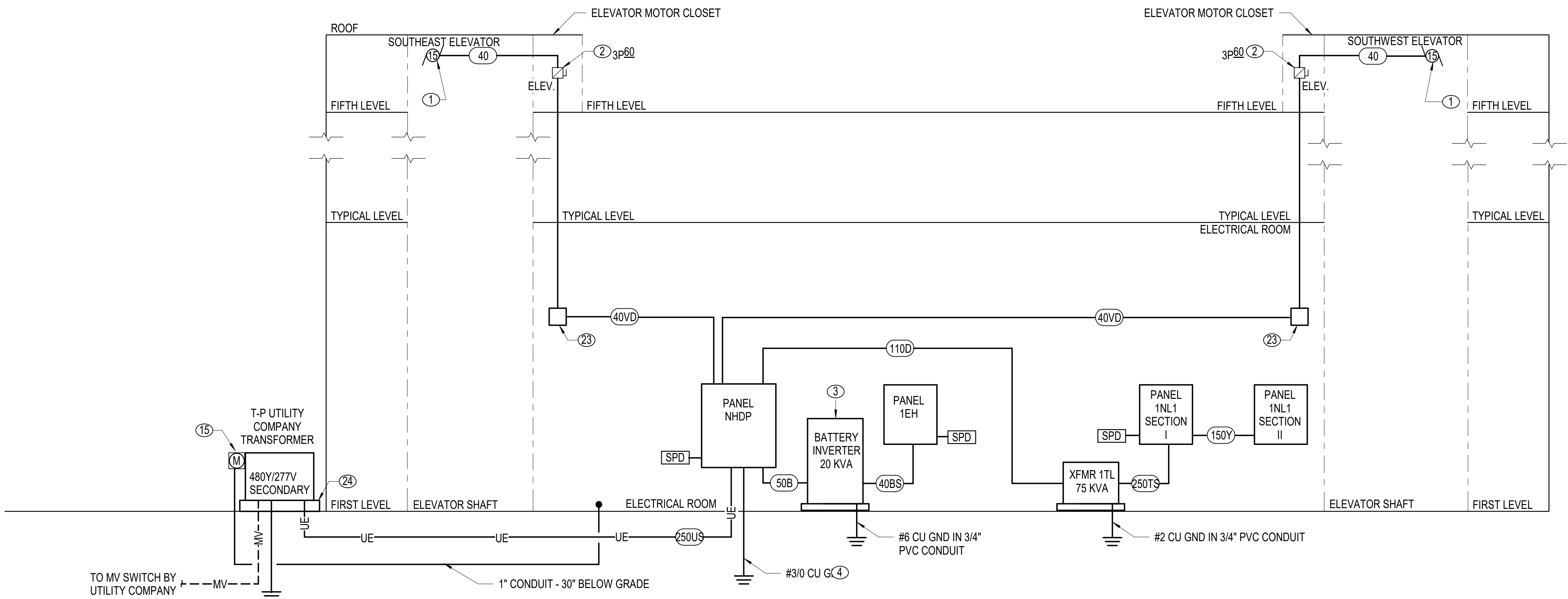
NO SCALE



CABLE LEGEND	
	PUNCH-DOWN TERMINATION FOR VOICE, CATEGORY 6
	PATCH PANEL TERMINATION FOR VOICE (VOIP), CATEGORY 6
	PATCH PANEL TERMINATION FOR DATA, CATEGORY 6
	LC TERMINATIONS FOR FIBER OPTIC CABLE AT FIBER ENCLOSURE
	CROSS CONNECT CABLING, CATEGORY 6

2 TELECOM RISER DIAGRAM

NO SCALE



1 POWER RISER DIAGRAM

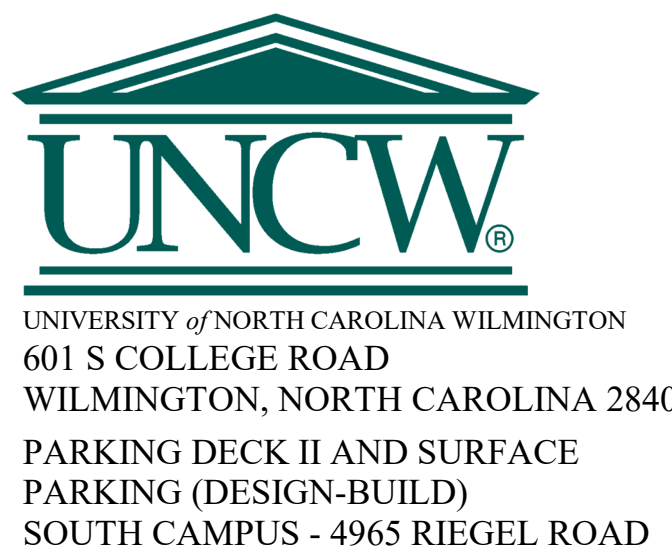
NO SCALE

GENERAL NOTES

1. FOR SITE PLAN AND DETAILS REFER TO DRAWING ES101, ES501 AND ES502
2. FOR ELECTRICAL DETAILS REFER TO DRAWING E-500.

Ⓝ NOTES

- COORDINATE ELEVATOR REQUIREMENTS WITH SPECIFICATION SECTION
142100 AND ELEVATOR SUPPLIER.
- HVAC DUTY FUSE DISCONNECT. PROVIDE WITH CURRENT LIMITING CLASS
RK1 FUSES, AND RATING PER MANUFACTURER RECOMMENDATION.
DISCONNECT SHALL BE EQUIPPED WITH TWO AUXILIARY CONTACTS THAT ARE
POSITIVELY OPENED WHEN POWER IS REMOVED FROM THE
ELEVATOR SYSTEM.
- THREE-PHASE CENTRAL LIGHTING INVERTER, DOUBLE CONVERSION, 24
KW, 480V/ 277V INPUT, 480V/277V OUTPUT. PROVIDE WITH SEISMIC FLOOR
KIT. PROVIDE FULL SELECTIVE COORDINATION OF THE EMERGENCY
SYSTEM PER NEC-700.25 REQUIREMENT. EMERGENCY SYSTEM
OVERCURRENT DEVICES SHALL BE SELECTIVELY COORDINATED WITH ALL
SUPPLY SIDE OVERCURRENT PROTECTIVE DEVICES. INVERTER INPUT AND
OUTPUT BREAKERS SHALL BE LSI TYPE. PROVIDE BREAKER FRAMES AND
SENSOR UNITS PER THE COORDINATION STUDY RESULTS, AND TRIP UNIT AS
INDICATED ON THE DRAWING. INVERTER INPUT BREAKER AND
OUTPUT BREAKER SHALL BE MINIMUM 18ATC10. SEE SPECIFICATION
SECTION 2673 FOR DETAIL OF COORDINATION REQUIREMENT.
INVERTER SHALL COMPLY WITH UL 924, NEMA 101 AND APPROF VDO. CRUCIAL
POWER PRODUCTS MODEL# WR030GHUHT3-V4 (OR EQUIVALENT EQUAL).
- REFER TO GROUNDING SYSTEM DETAIL 1/E-500 FOR GROUNDING
REQUIREMENTS.
- MAIN GROUNDING BUSBAR (MGB) 24". (SEE DETAIL 6 ON DRAWING E-500)
- RUN GROUNDING ELECTRODE CONNECTION BETWEEN THE MAIN AND
LOCAL GROUND BUS BARS IN CONDUIT. BOND THE METAL CONDUIT AT
EACH END TO THE GROUND BUS BARS.
- RUN ONE #10 AWG IN 3/4" C TO FIRE ALARM PANELS. (REFER TO FA
DRAWINGS FOR LOCATION OF FIRE ALARM PANELS)
- RUN ONE #3/0 AWG IN 1-1/4" TO MAIN WATER PIPE. (REFER TO PUMPING
DRAWINGS FOR LOCATION OF MAIN WATER PIPE)
- RUN ONE #3/0 IN 1-1/4" TO GROUNDING TRIAD.
- BOND THE INTERIOR METALLIC PIPING TO THE GROUNDING SYSTEM
PROVIDE A BONDING JUMPER ACROSS THE WATER METER. (SEE
PLUMBING DRAWINGS FOR LOCATION OF WATER METER)
- PROVIDE 50% SPARE HOLES. (TYPE FOR ALL GROUND BUS BARS)
- GROUNDING CONDUCTORS BETWEEN THE MGB AND THE TMGB SHALL BE
#3/0 AWG, UNB CONNECT GROUNDING CONDUCTORS USING
COMPRESSION CONNECTORS.
- TELECOMMUNICATIONS MAIN GROUNDING BUSBAR (TMGB). (SEE DETAIL 5
ON DRAWING E-500)
- #6 AWG BONDING JUMPER.
- NEW PAD MOUNTED TRANSFORMER, METER BASE, CURRENT
TRANSFORMERS (CTS) AND REQUIRED METER SHALL BE PROVIDED AND
INSTALLED BY UTILITY COMPANY. CONTRACTOR SHALL INSTALL ONE 1"
EMPTY CONDUIT FROM METER BASE TO ELECTRICAL ROOM FOR
INTERFERENCE WITH BUILDING MANAGEMENT SYSTEM WIRING FROM METER
BASE BY UNCW-I.T. TERMINATE CONDUIT "12" AFF NEAR PANEL. NHDP.
REFER TO SITE DRAWINGS FOR ADDITIONAL INFORMATION.
- WALL MOUNT TELECOMMUNICATIONS ENCLOSURE "CUBE-IT PLUS"
CABINET; 24" WIDTH X 24" DEPTH X 36" HEIGHT, STEEL, PART
#11840-736, TYPICAL WALL MOUNTING RAIL. PROVIDE A PUSHBUTTON LOCK BOX
FOR ENCLOSURE'S KEYS STORAGE, AND MOUNT TO THE OUTSIDE OF THE
WALL MOUNT ENCLOSURE.
- MOUNT PROTECTED ENTRANCE TERMINAL IN THE BACK OF THE WALL
MOUNT ENCLOSURE AND LINK TO THE TERMINATION POINT.
- CABINET UPS WILL BE PROVIDED BY UNCW-I.T.
- PROVIDE HOLE PULL DESIGNED TO SEAL AROUND EACH INDIVIDUAL
INNERDUT AND SEALED TO PREVENT LEAKAGE INTO THE BUILDING
- SEAL ALL DUCTS AT TERMINATIONS OR ALL CONDUIT ENTRY POINTS WITH
EXPANDABLE REUSABLE CONDUIT PLUGS CAPABLE OF WITHSTANDING
15-PSI MINIMUM HYDRO STATIC PRESSURE IN MANHOLE AND BUILDING.
- ELECTRICAL EQUIPMENT: TRANSFORMER, BATTERY INVERTER, REFER TO
POWER RISER DIAGRAM FOR CONDUCTOR SIZES AND QUANTITY.
- BOND EXPOSED METAL FRAME WORK AT EACH STAR WITH MINIMUM #2
AWG 3/4" DIA.
- PROVIDE 6" SQUARE PULL BOX BETWEEN THE HORIZONTAL AND VERTICAL
CONDUIT RUN AND AS REQUIRED PER CODE.
- REFER TO DETAIL 7 DRAWING ESS01 FOR TRANSFORMER CONCRETE PAD
WORKING CLEARANCE REQUIREMENTS AND SECONDARY CONDUIT
TERMINATION.
- GROUNDING CONDUCTOR BETWEEN THE TMGB AND SGB SHALL BE
MINIMUM #4 AWG, UNB. CONNECT GROUNDING CONDUCTORS USING
COMPRESSION CONNECTORS.



SCO ID NUMBER: 18-19226-01A
CODE: 41828
ITEM: 301

CONTRACTOR
Balfour Beatty
Construction

DESIGNER

CLARK NEXSEN

1523 ELIZABETH AVENUE, SUITE 300
CHARLOTTE, NORTH CAROLINA 28204
704-377-8800

CLARK NEXSEN LICENSE NUMBER: C-1028



13860 Ballantyne Corporate Place
Suite 140
Charlotte, NC 28277
T: 704.247.6230
www.walkerconsultants.com
NC License No. F-0518



CIVIL ENGINEER
243 NORTH FRONT STREET
WILMINGTON, NORTH CAROLINA
28401
910.343.1048

PROFESSIONAL SEA



NC CORPORATE ENGINEERING LICENSE #C-1028

SUBMITTA

04/15/2015

CONSTRUCTION DOCUMENT
SUBMITTAL 01

SUBMITTAL 01

REVISIONS

[illegible]

KEY PLAN

SHEE

RISER DIAGRAMS

E-600

DESIGN: WAZ
DRAWN: KAW
REVIEW: WAZ

CN 8112

LUMINAIRE SCHEDULE

TYPE	DESCRIPTION	MANUFACTURER	MODEL NO.	LAMPS TYPE	VOLTAGE	POWER	MOUNTING	NOTES
A	17" DIAMETER LED LUMINAIRE WITH TYPE V DISTRIBUTION, TEXTURED POLYCARBONATE LENS, LIGHT GRAY FINISH, INTEGRAL DRIVER, FUSING, INTEGRAL OCCUPANCY SENSOR AND PHOTOCELL (SUFFIX "TL50").	KENALL OR EQUIVALENT	TD17-QM-5S-TP-LG-72L-40K8-DCC-DV-FS-TL50	LED	277 V	78 VA	SURFACE	
B	23" DIAMETER LED LUMINAIRE WITH TYPE V DISTRIBUTION, WIDE, TEXTURED CLEAR POLYCARBONATE LENS, LIGHT GRAY FINISH, INTEGRAL DRIVER, FUSING, INTEGRAL OCCUPANCY SENSOR AND PHOTOCELL (SUFFIX "TL50"). MOUNTED ON A 25'-0" HINGED POLE. POLE TO BE PROVIDED WITH A DAMPER PER MANUFACTURER RECOMMENDATIONS.	KENALL OR EQUIVALENT POLE: KW INDUSTRIES OR EQUIVALENT	TPD23-5S-TP-LG-295L40K-DCC-DV-FS-TMA-TW180-TL50 POLE: THSP25-7.15-T-K841-DM2180-WPRP-BC- WITH THSP-LW-7.15 LOWERING WINCH	LED	277 V	325 VA	POLE MOUNTED	
C	8" X 4" LINEAR 0-10 VOLT DIMMABLE LED LUMINAIRE WITH MATTE WHITE FINISH, CLEAR POLYCARBONATE LENS, INTEGRAL DRIVER AND FUSING. LUMINAIRE STEMS ARE NOT PROVIDED WITH FIXTURE, CONTRACTOR TO PROVIDE.	KENALL OR EQUIVALENT	MLHA8-48-F-MW-CP-45L40K-DCC-1-DV-FS-PM	LED	277 V	49 VA	PENDANT MTD 10'-0" FROM BOTTOM OF FIXTURE TO AFF	
C2	8" X 8" LINEAR (TWO 4'-0" LUMINAIRES FACTORY CONNECTED) LED LUMINARIE WITH MATTE WHITE FINISH, CLEAR POLYCARBONATE LENS, INTEGRAL DRIVER AND FUSING. LUMINAIRE STEMS ARE NOT PROVIDED WITH FIXTURE, CONTRACTOR TO PROVIDE.	KENALL OR EQUIVALENT	MLHA96-F-MW-CP-45L40K-DCC-1-DV-FS-PM	LED	277 V	98 VA	PENDANT MTD 10'-0" FROM BOTTOM OF FIXTURE TO AFF.	
D	VAPORTITE LED LUMINAIRE WITH SILVER FINISH, WALL MOUNTED 36" ABOVE ELEVATOR PIT FLOOR AND AT TOP OF ELEVATOR SHAFT 4'-0" ABOVE MOTOR MAINTENANCE DECK HEIGHT. FIELD COORDINATE SPECIFICS WITH ELEVATOR SUPPLIER.	SPECTRUM OR EQUIVALENT	WJ1LW-20L-40K-EX-FJ1-CP104KO-PT	LED	277 V	16 VA	WALL	
H	2'-0" LINEAR LED STRIPLIGHT, WALL MOUNTED AND CENTERED ABOVE DOOR WITH WHITE STEEL FINISH, FROSTED ACRYLIC LENS AND ON/OFF DRIVER FUNCTION.	COLUMBIA OR EQUIVALENT	LCL2-40ML-EU	LED	277 V	24 VA	WALL	
J1	18" ARCHITECTURAL STYLE WALL PACK WITH SINGLE FUSE, TYPE IV FORWARD THROW DISTRIBUTION, GRAY FINISH AND INTEGRAL PHOTOCELL UCN. CENTER OF FIXTURE WALL MOUNTED 10'-8" AFG.	KIM LIGHTING OR EQUIVALENT	WDM-D-48L-55-4K8-4F-UNV-LG-PC-SF	LED	277 V	55 VA	WALL MTD	DO NOT PROVIDE INTEGRAL PHOTO CELL FOR LUMINAIRES CONTROLLED VIA LIGHTING CONTACTOR
J2	13" ARCHITECTURAL STYLE WALL PACK WITH SINGLE FUSE, FORWARD THROW DISTRIBUTION, DIFFUSE LENS, GRAY FINISH AND INTEGRAL PHOTOCELL UCN. CENTER OF FIXTURE WALL MOUNTED 10'-8" AFG.	KIM LIGHTING OR EQUIVALENT	WDS-D-24L-40-4K8-FTD-UNV-LG-PC-SF	LED	277 V	42 VA	WALL MTD	DO NOT PROVIDE INTEGRAL PHOTO CELL FOR LUMINAIRES CONTROLLED VIA LIGHTING CONTACTOR
J3	18" ARCHITECTURAL STYLE UP MOUNTING WALL PACK WITH SINGLE FUSE, TYPE SPOT/COLUMN DISTRIBUTION, GREY FINISH. MOUNT CENTER OF FIXTURE AT 17'-0" AFG.	KIM LIGHTING OR EQUIVALENT	WDM-U-48L-65-4K8-SP-UNV-LG-SF	LED	277 V	68 VA	WALL MTD	
P1	POST TOP LIGHT WITH TYPE V DISTRIBUTION, 6000 LUMEN OUTPUT, 5000K CCT, FROSTED GLASS AND BLACK FINISH. MOUNTED ON 14' BLACK POLE.	YAORONG POLE: GE LIGHTING SOLUTION OR EQUIVALENT	YR-TP300-W060 POLE: ARTA-14-3S-5.0-B-BL-T	LED	277 V	60 VA	MOUNTED ON 14' POLE	POLE SHALL BE UL LISTED. REFER TO DETAIL 1 / ES502.
P2	13 6" X 4" STREET LIGHT WITH TYPE III DISTRIBUTION, 24,600 LUMEN OUTPUT, 5000K CCT, AND BLACK FINISH. REUSE EXISTING POLE AND LIGHT.	FINTRONX	PLK-240-48-50K-A3M112-BL	LED	480 V	240 VA	POLE MOUNTED	REUSE EXISTING/ RELOCATED POLES. REFER TO DETAIL 2 / ES502.
X1	SINGLE FACE WET LABEL EXIT SIGN WITH RED LETTERS AND WHITE DIE-CAST ALUMINUM HOUSING. PROVIDE WITH PENDANT MOUNT KIT. SIGN TO BE MOUNTED A MINIMUM OF 8'-2" ABOVE FINISHED FLOOR TO BOTTOM OF EXIT SIGN WITH WORDING IN COMPLETE VIEW BELOW BEAMS.	DUAL-LITE OR EQUIVALENT	SEWL-SRW	LED	277 V	5 VA	PENDANT MTD 8'-2" TO BOTTOM OF SIGN MINIMUM	
X2	SINGLE FACE WET LABEL EXIT SIGN WITH RED LETTERS AND WHITE DIE-CAST HOUSING, FLAT WALL MOUNTED AND CENTERED ABOVE DOORS.	DUAL-LITE OR EQUIVALENT	SEWL-SRW	LED	277 V	5 VA	FLAT WALL	
X3	DOUBLED FACED EXIT SIGN WITH RED LETTERS AND WHITE DIE-CAST ALUMINUM HOUSING. PROVIDE WITH PENDANT MOUNT KIT AND CHEVRONS AS NOTED ON FLOOR PLANS. BE MOUNTED A MINIMUM OF 8'-2" ABOVE FINISHED FLOOR TO BOTTOM OF EXIT SIGN WITH WORDING IN COMPLETE VIEW BELOW BEAMS.	DUAL-LITE OR EQUIVALENT	SEWL-DRW	LED	277 V	5 VA	PENDANT MTD 8'-2" TO BOTTOM OF SIGN MINIMUM	

EQUIPMENT CONNECTION SCHEDULE

EQUIPMENT DESIGNATION			EQUIPMENT RATINGS							STARTER	DISCONNECT DATA		
EQUIPMENT DESIGNATION	LOCATION	DESCRIPTION	HP / WATTS	VOLT	PH	FLA	KVA	OCPD	TYPE	TYPE	RATING	OCPD	
CU-1/AC-1	TELECOM AND SECURITY ROOMS	SPLIT SYSTEM	2300W	208	1	11.2	2.33	15		MAG	30	MANUF	
CU-2/AC-2	ELECTRICAL ROOM	SPLIT SYSTEM	2300W	208	1	11.2	2.33	20		MAG	30	MANUF	
UH-1	ELECTRICAL ROOM	UNIT HEATER	5000W	208	3	13.9	5.01	20		MAG	30	MANUF	
SP-1	SOUTHEAST ELEVATOR SHAFT	SUMP PUMP	.5 HP	120	1	9.8	1.18	20		MRS	20	----	
SP-2	SOUTHWEST ELEVATOR SHAFT	SUMP PUMP	.5 HP	120	1	9.8	1.18	20		MRS	20	----	
FACP	ELECTRICAL ROOM	FIRE ALARM CONTROL UNIT	720W	120	1	6.0	0.72	20		----	----	----	
HP-1/ACHP-1	ELEVATOR CLOSET	HEAT PUMP	3000W	208	1	14.4	3.00	30		MAG	30	MANUF	
P-1	EXTERIOR	BOOSTER PUMP	2HP	208	3			20		NF	30		
ABBREVIATIONS													
NF	NON-FUSED		MAG		MAGNETIC STARTER								
MANUF.	PROVIDE IN ACCORDANCE WITH MANUFACTURER'S RECOMMENDATION												
MRS	MOTOR RATED SWITCH												
----	INDICATES NOT APPLICABLE												
MCCB	MOLDED CASE CIRCUIT BREAKER		NOTE 1: CONDUIT SIZES BASED OF 40% FILL OF EMT. CONTRACTOR SHALL SIZE CONDUIT PER NEC IF CONDUIT OTHER THAN EMT IS USED.										

PANEL NHDP SCHEDULE

250 AMP MCB 480Y/277 VOLTS 3PH, 4W, 5N MIN. 16 KAC SURFACE MOUNTED															
CKT. NO.	LOAD DESCRIPTION	COND. SIZE	WIRE SIZE	BKR TRIP	KVA	PH	KVA	AMPS	BKR TRIP	WIRE SIZE	COND. SIZE	LOAD DESCRIPTION	CKT. NO.		
1	PANEL 1EH	1-1/4	4	50	28.2	7.8	A	5.8	21.0	40	*	SOUTHEAST ELEVATOR MOTOR	2		
3	VIA BATTERY INVERTER				23.5	6.5	B	5.8	21.0				4		
5	LSI TYPE 100 A FRAME 50 A TRIP				14.0	3.9	A	5.8	21.0				6		
7	EXTERIOR FEEDS TRAIL LIGHTING	1-1/2	6	20	0.7	0.2	A	5.8	21.0	40	*	SPARE	8		
9					0.7	0.2	B	5.8	21.0	40	*	SOUTHWEST ELEVATOR MOTOR	10		
11					0.7	0.2	C	5.8	21.0				12		
13	EXTERIOR BUILDING LIGHTING	3/4	10	20	2.2	0.6	A	5.8	21.0				14		
15	EXTERIOR WALL WASH STAR LIGHTING	3/4	10	20	3.3	0.8	B					SPARE	16		
17	FIRST TIER LIGHTING	3/4	10	20	2.8	0.8	C	0.9	3.1	20	10	3/4	SECOND TIER LIGHTING	18	
19	FIRST TIER LIGHTING	3/4	10	20	4.2	1.2	A	0.9	3.1	20	10	3/4	SECOND TIER LIGHTING	20	
21	FIRST TIER LIGHTING	3/4	10	20	3.1	0.9	B	0.9	3.1	20	10	3/4	SECOND TIER LIGHTING	22	
23	THIRD TIER LIGHTING	3/4	10	20	3.1	0.9	C	0.9	3.1	20	10	3/4	FOURTH TIER LIGHTING	24	
25	THIRD TIER LIGHTING	3/4	10	20	3.1	0.9	A	0.9	3.1	20	10	3/4	FOURTH TIER LIGHTING	26	
27	THIRD TIER LIGHTING	3/4	10	20	3.1	0.9	B	0.9	3.1	20	10	3/4	FOURTH TIER LIGHTING	28	
29	FIFTH TIER LIGHTING	3/4	10	20	4.7	1.3	A	0.6	2.0	20	6	1-1/2	SITE EMERGENCY PHONE	30	
31	FIFTH TIER LIGHTING	3/4	10	20	4.7	1.3	A	0.6	2.9	20	6	1-1/2	EXTERIOR PARKING LIGHTING	32	
33	LC1 LIGHTING CONTACTOR COIL	3/4	12	20	0.7	0.2	B	0.8	2.9					34	
35	SPARE	*	*	20			C	0.8	2.9	30				36	
37	PANEL 1NL1 SECTION I				104.2	28.8	A	188.6	30.4				SPD (NOTE 1)	38	
39	FED VIA XMR 1TL (75 KVA)				101.6	28.1	B							40	
41					109.5	30.4	C							42	
TOTAL AMPS (CONN. LOAD)															
TOTAL AMPS (FEEDTHRU)															
TOTAL AMPS (CONN. LOAD + FEED-THRU)															
PANELBOARD OPTIONS:															
1. BREAKER RATING AND WIRE SIZE MAY VARY BY MANUFACTURER. PROVIDE BREAKER AND WIRE SIZE IN ACCORDANCE WITH MANUFACTURER RECOMMENDATIONS.															

LOAD DESCRIPTION	PANEL CONN. LOAD	SUBFEED CONN. LOAD	FEEDTHRU CONN. LOAD	TOTAL LOAD	D.F. MULT.	TOTAL KVA DEMAND
LIGHTING RECEPTACLES	17.5	0.4	0.4	18.3	0.8	15.0
HEAT EQUIP		46.4	46.4	92.8	0.8	74.2
ELECTRIC HEAT		8.0	8.0	16.0	0.8	12.8
MISCELLANEOUS	0.2	15.0	15.0	30.2	0.8	24.2
ELEVATOR		14.9	14.9	29.8	0.8	23.8
TOTALS (CONN. KVA)	22.7	70.7	70.7	143.4		114.7
TOTALS (CONN. KVA + 20%)	63.2	166.0	166.0	331.2		269.4
TOTALS (CONN. AMPS)	63.3	166.0	166.0	331.3		269.5
TOTALS (CONN. AMPS + 20%)	76.0	199.2	199.2	395.2		323.4

PANEL 1EH SCHEDULE

100 AMP MLO 480Y/277 VOLTS 3PH, 4W, 5N MIN. 14 KAC SURFACE MOUNTED															
CKT. NO.	LOAD DESCRIPTION	COND. SIZE	WIRE SIZE	BKR TRIP	AMPS	KVA	PH	KVA	AMPS	BKR TRIP	WIRE SIZE	COND. SIZE	LOAD DESCRIPTION	CKT. NO.	
1	FIRST TIER EMERGENCY LIGHTING	3/4	10	20	5.4	1.5	A	1.3	4.5	20	10	3/4	SECOND TIER EMERGENCY LIGHTING	2	
3	FIRST TIER EMERGENCY LIGHTING	3/4	10	20	4.0	1.1	B	1.3	4.8	20	10	3/4	SECOND TIER EMERGENCY LIGHTING	4	
5	THIRD TIER EMERGENCY LIGHTING	3/4	10	20	4.5	1.3	C	1.3	4.5	20	10	3/4	FOURTH TIER EMERGENCY LIGHTING	6	
7	THIRD TIER EMERGENCY LIGHTING	3/4	10	20	4.8	1.3	A	1.3	4.8	20	10	3/4	FOURTH TIER EMERGENCY LIGHTING	8	
9	FIFTH TIER EMERGENCY LIGHTING	3/4	10	20	4.7	1.3	B	0.1	0.2	20	10	3/4	SPARE	10	
11	FIFTH TIER EMERGENCY LIGHTING	3/4	10	20	4.7	1.3	C	0.1	0.2	20	10	3/4	ELEVATOR SHAFT SOUTHWEST LIGHTS	12	
13	STAR TOWER SOUTHWEST	3/4	10	20	8.3	2.3	A	0.1	0.2	20	10	3/4	ELEVATOR SHAFT SOUTHWEST LIGHTS	14	
15	STAR TOWER SOUTHWEST	3/4	10	20	8.3	2.3	B	0.5	1.6	20	10	3/4	TELECOM/ELECTRICAL ROOM LIGHTS	16	
17	SPARE													18	
19	SPARE													20	
21	SPARE													22	
23	SPARE													24	
TOTAL AMPS (CONN. LOAD)															
TOTAL AMPS (FEEDTHRU)															
TOTAL AMPS (CONN. LOAD + FEED-THRU)															
PANELBOARD OPTIONS:															
1. BREAKER RATING AND WIRE SIZE MAY VARY BY MANUFACTURER. PROVIDE BREAKER AND WIRE SIZE IN ACCORDANCE WITH MANUFACTURER RECOMMENDATIONS.															

PANEL 1NL1 SECTION I SCHEDULE

250 AMP MCB 208Y/120 VOLTS 3PH, 4W, 5N MIN. 10 KAC SURFACE MOUNTED															
CKT. NO.	LOAD DESCRIPTION	COND. SIZE	WIRE TRIP	AMPS	KVA	PH	KVA	AMPS	BKR TRIP	WIRE SIZE	COND. SIZE	LOAD DESCRIPTION	CKT. NO.		
1	TELECOM RM CU-1/AC-1	3/4	12	15	11.2	1.2	A	0.7	6.0	20	12	3/4	FIRE ALARM CONTROL PANEL (NOTE 2)	2	
3	ELECTRICAL RM CU-2/AC-2	3/4	12	20	11.2	1.2	C	1.5	14.4	30	8	3/4	ELEVATOR CLOSET SOUTHWEST	4	
5	SPARE			20	11.2	1.2	A	1.5	14.4	30	8	3/4	ELEVATOR CLOSET SOUTHWEST	6	
7	SOUTHWEST ELEVATOR SHAFT SF-1	3/4	10	20	9.8	1.2	B	0.3	2.5	15	8	3/4	HTD BACKFLOW PREVENTER ENCL.	8	
9	HEAT TRACER ELEVATOR SHAFT SF-1	3/4	12	15	0.3	0.0	A	0.0	0.0	20	12	3/4	SPARE	10	
15	SECURITY RECEPTACLE FOR BAS	3/4	12	20	3.0	0.4	B						SECURITY RM CU-1/AC-1	16	
16	SECURITY RM RECEPTACLE	3/4	12	20	3.0	0.4	C	1.2	11.2	15	12	3/4	SECURITY RM RECEPTACLE	17	
18	SOUTHEAST ELEVATOR SHAFT SF-2	3/4	10	20	9.8	1.2	A	0.3	2.5	15	8	3/4	SECURITY RM RECEPTABLES	20	
21	SOUTHEAST ELEVATOR SHAFT RECEPT	3/4	10	20	9.8	1.2	B	0.9	7.5	20	12	3/4	SECURITY RM RECEPT. DATA EQUIPT	22	
23	SOUTHWEST ELEVATOR SHAFT RECEPT	3/4	10	20	9.8	1.2	C	0.6	5.0	20	12	3/4	SECURITY RM RECEPT. CAMERAS EQUIPT	24	
25	EAST RECEPTABLES AND PHONE	3/4	10	20	7.5	0.9	A	0.5	5.0	20	12	3/4	ELECTRICAL RM RECEPTABLES	26	
27	WEST RECEPTABLES AND PHONE	3/4	10	20	7.5	0.9	B	0.4	3.0	20	12	3/4	SECURITY RM RECEPTABLES	28	
29	MIDDLE RECEPTABLES AND PHONE	3/4	10	20	7.5	0.9	C	1.9	16.0	20	12	3/4	SECURITY RM RECEPTABLES	30	
31	SOUTHEAST ELEVATOR CAR LIGHTS	3/4	10	20	2.0	0.2	A	19.6	163.8	150	*	*	PANEL INLT. SECTION II	32	
33	SOUTHWEST ELEVATOR CAR LIGHTS	3/4	10	20	2.0	0.2	B	19.6	163.8	30	10	3/4	SPD (NOTE 1)	34	
35	PARKING MANAGEMENT SITE SIGNAGE	1-1/2	6	20	3.0	0.4	C	18.8	167.0					36	
37	ELEVATOR CLOSET RECEPTACLE	3/4	12	20	3.0	0.4	A							38	
41	TELECOM RM RECEPTABLES	3/4	12	20	1.7	0.0	B							42	
TOTAL AMPS (DOWN LOAD)				A		260.4		B		284.4		C		253.4	
TOTAL AMPS (FEEDTHRU)															
TOTAL AMPS (DOWN LOAD + FEEDTHRU)				A		260.4		B		284.4		C		253.4	
PANEL BOARD OPTIONS															
PANEL BOARD NOTES															

4/15/2019 1:07:19 PM C:\new\Projects\172 UNCW_Parking_Deck_IL_F17_1\uncw@clarknexsen.com\vt

1

2

3

4

5

6

FIRE ALARM LEGEND

FACP

FIRE ALARM CONTROL PANEL

NAC

NOTIFICATION APPLIANCE CIRCUIT PANEL

H

HEAT DETECTOR, CEILING MOUNTED

S

SMOKE DETECTOR, CEILING MOUNTED

CM

CONTACT MONITOR MODULE

F

MANUAL PULL STATION, MOUNT 4'-0" AFF

DACT

DIGITAL ALARM COMMUNICATOR TRANSMITTER

ABBREVIATIONS

O.C.

ON CENTER

EP

ELECTRICAL POWER (120V AC)

WP

WEATHERPROOF / OUTDOOR RATED (SUBSCRIPT)

C

CEILING MOUNTED (SUBSCRIPT)

E

EXISTING (SUBSCRIPT)

FACP

FIRE ALARM CONTROL PANEL

GENERAL NOTES

1.

DEDICATED FUNCTION FIRE ALARM SYSTEM SHALL BE INSTALLED IN ACCORDANCE WITH NFPA 72 - 2013 EDITION. PROVIDE WIRING AS RECOMMENDED BY MANUFACTURER.

2.

COORDINATE FIRE ALARM SYSTEM WITH ALL TRADES TO ENSURE PROPER COMPLIANCE WITH CODES AND TO AVOID CONFLICTS.

3.

IN AREAS WITH LAY-IN CEILING TILES, INSTALL CEILING MOUNTED FIRE ALARM DEVICES CENTER OF TILE.

4.

NO PIPE PENETRATIONS OF STRUCTURAL MEMBERS, EXCEPT AS NOTED, ARE PERMITTED WITHOUT THE APPROVAL OF THE ARCHITECT/ENGINEER.

5.

ALL FIRE ALARM APPLIANCES, DEVICES, BACKBOXES, AND JUNCTION BOXES MUST BE OUTDOOR RATED, INCLUDING ITEMS INSIDE OF ROOMS.

1

DEDICATED FUNCTION FIRE ALARM SYSTEM SEQUENCE OF OPERATION MATRIX

NO SCALE

2

DEDICATED FUNCTION FIRE ALARM SYSTEM RISER DIAGRAM

NO SCALE

3

ELEVATOR FIRE PROTECTION DIAGRAM

NO SCALE

UNCW

UNIVERSITY of NORTH CAROLINA WILMINGTON

601 S COLLEGE ROAD

WILMINGTON, NORTH CAROLINA 28403

PARKING DECK II AND SURFACE PARKING (DESIGN-BUILD)

SOUTH CAMPUS - 4965 RIEGEL ROAD

SCO ID NUMBER: 18-19226-01A

CODE: 41828

ITEM: 301

CONTRACTOR

Balfour Beatty

Construction

DESIGNER

CLARK NEXSEN

1523 ELIZABETH AVENUE, SUITE 300

CHARLOTTE, NORTH CAROLINA 28204

704-377-8800

CLARK NEXSEN LICENSE NUMBER: C-1028

WALKER

CONSULTANTS

13660 Ballantyne Corporate Place

Suite 140

Charlotte, NC 28277

T: 704.247.6230

www.walkerconsultants.com

NC License No. F-0518

MCKIM&CREED

CIVIL ENGINEER

243 NORTH FRONT STREET

WILMINGTON, NORTH CAROLINA

28401

910.343.1048

PROFESSIONAL SEAL

CLARK NEXSEN

CERT NO. 50680

NORTH CAROLINA

NOT FOR CONSTRUCTION

SEAL 041524

REGISTERED PROFESSIONAL ENGINEER

NORTH CAROLINA

NC CORPORATE ENGINEERING LICENSE #C-1028

SUBMITTAL

04/15/2019

CONSTRUCTION DOCUMENT

SUBMITTAL 01

REVISIONS

KEY PLAN

SHEET

FIRE ALARM LEGEND NOTES AND DETAILS

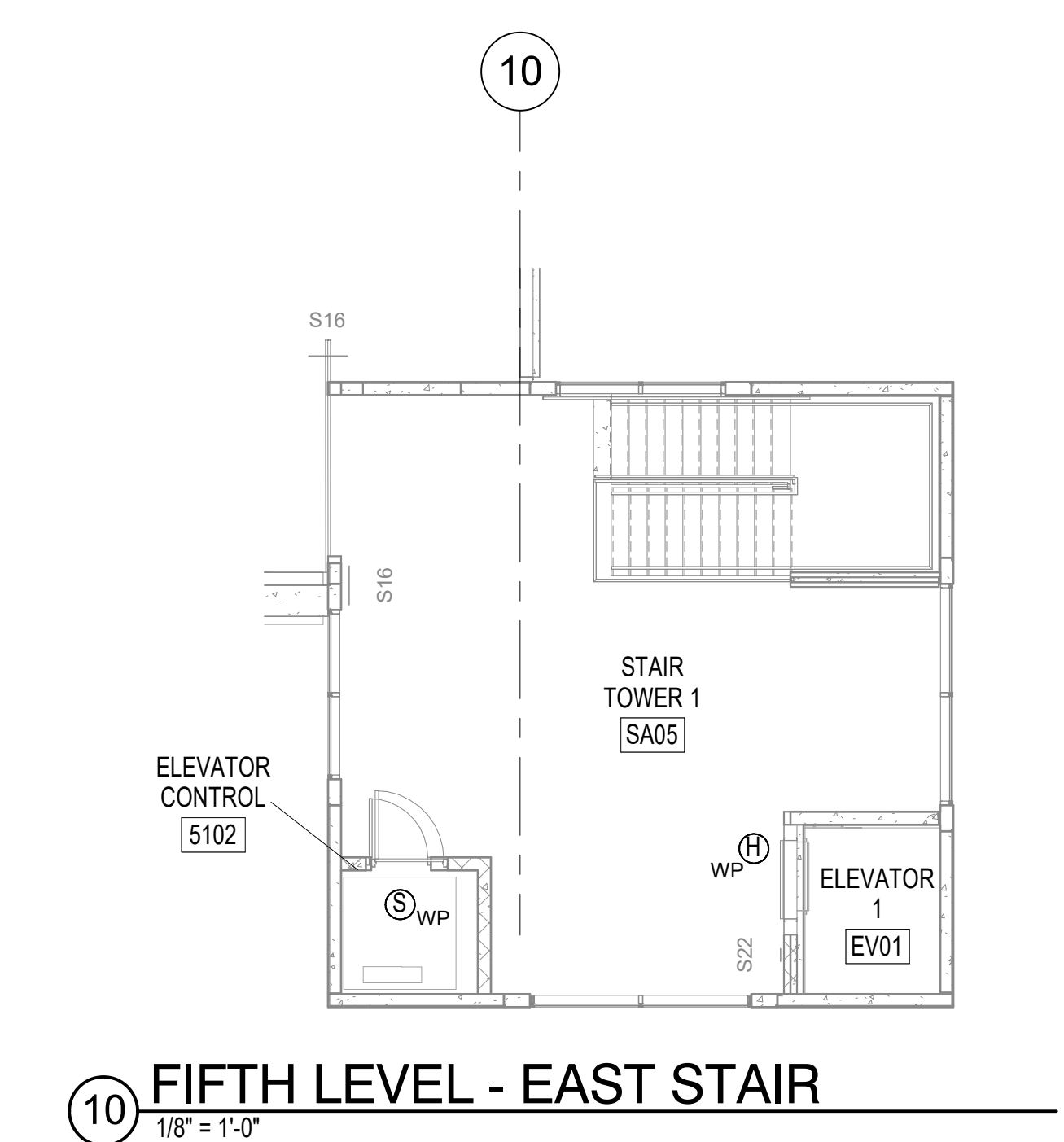
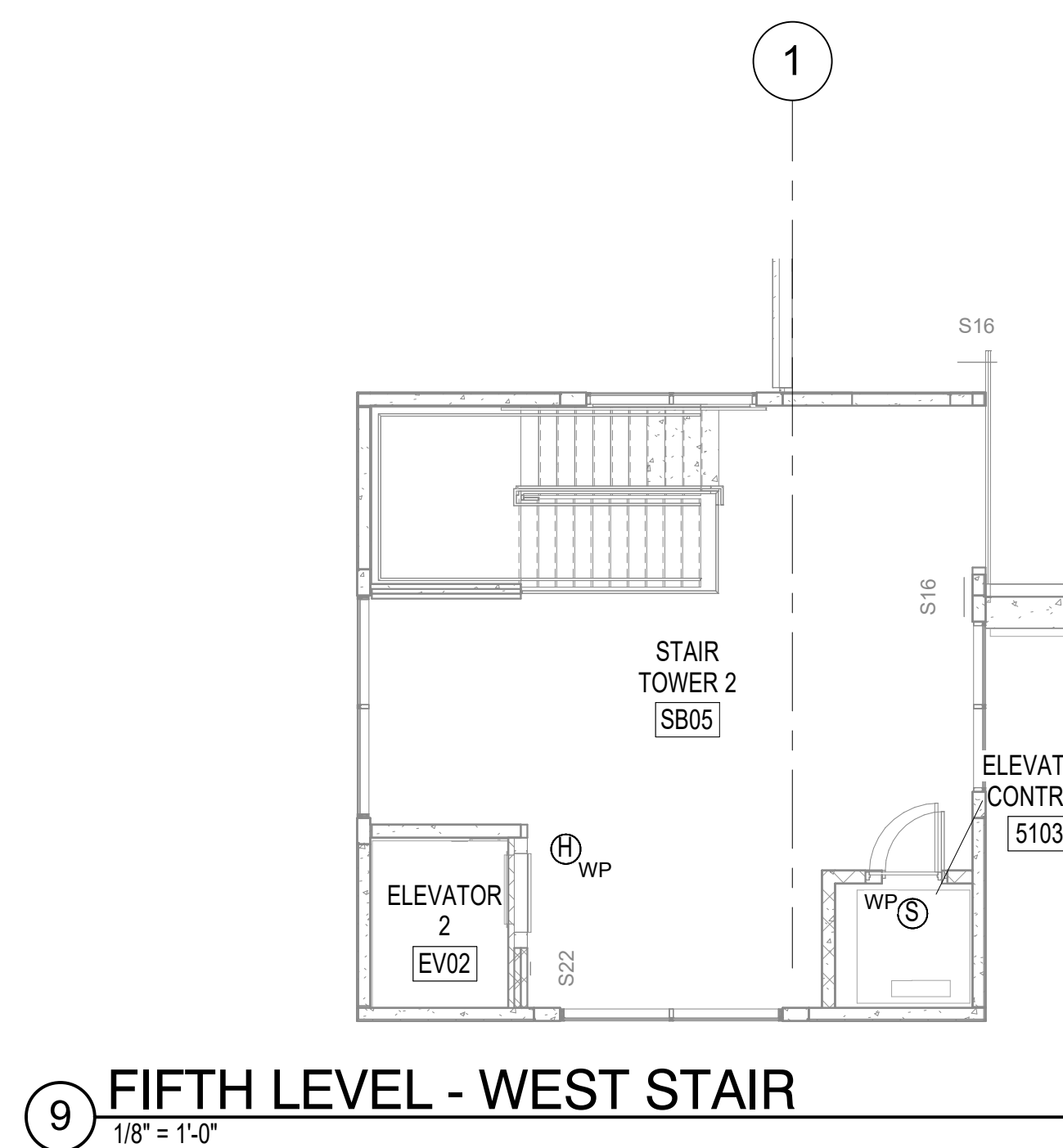
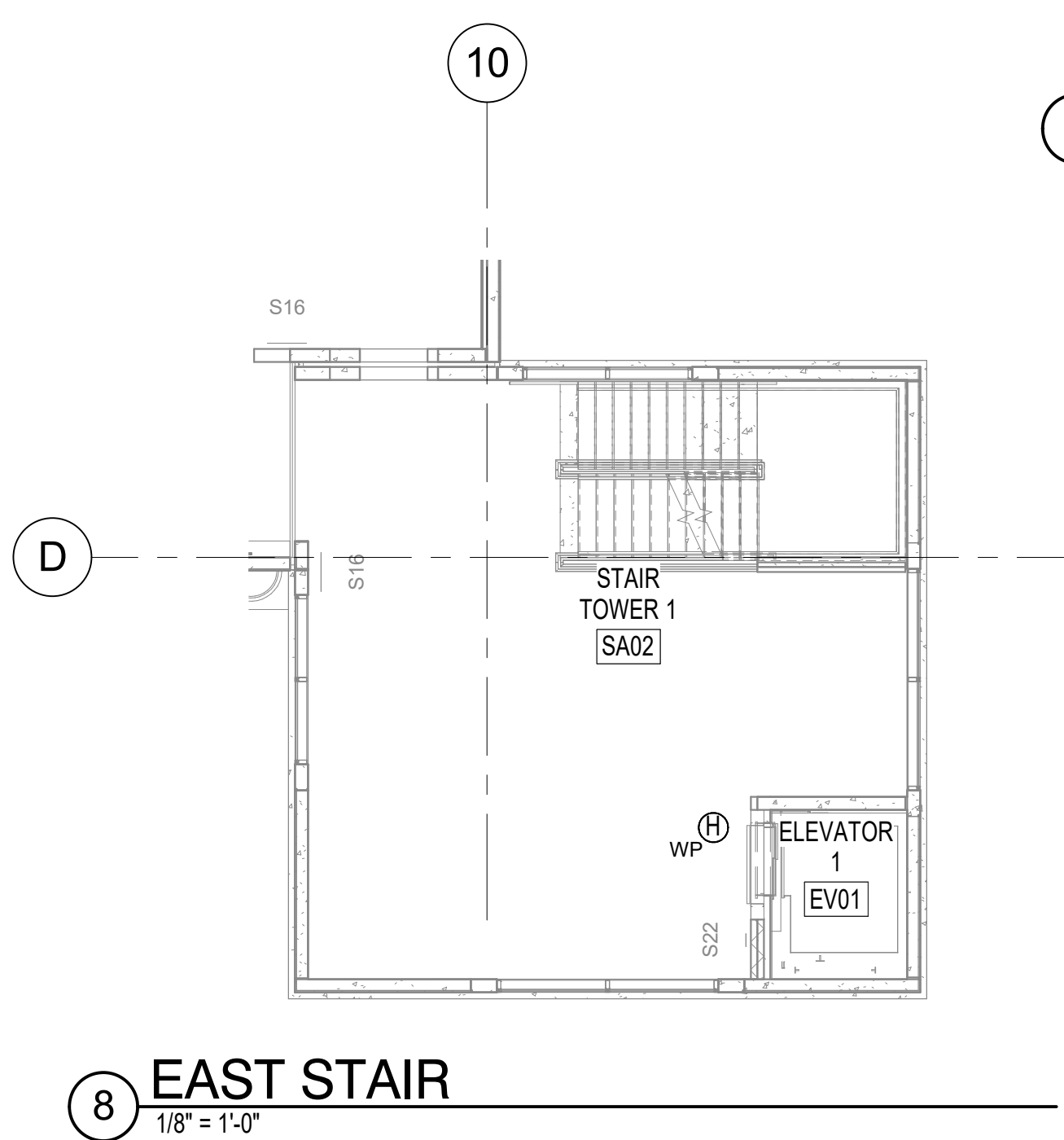
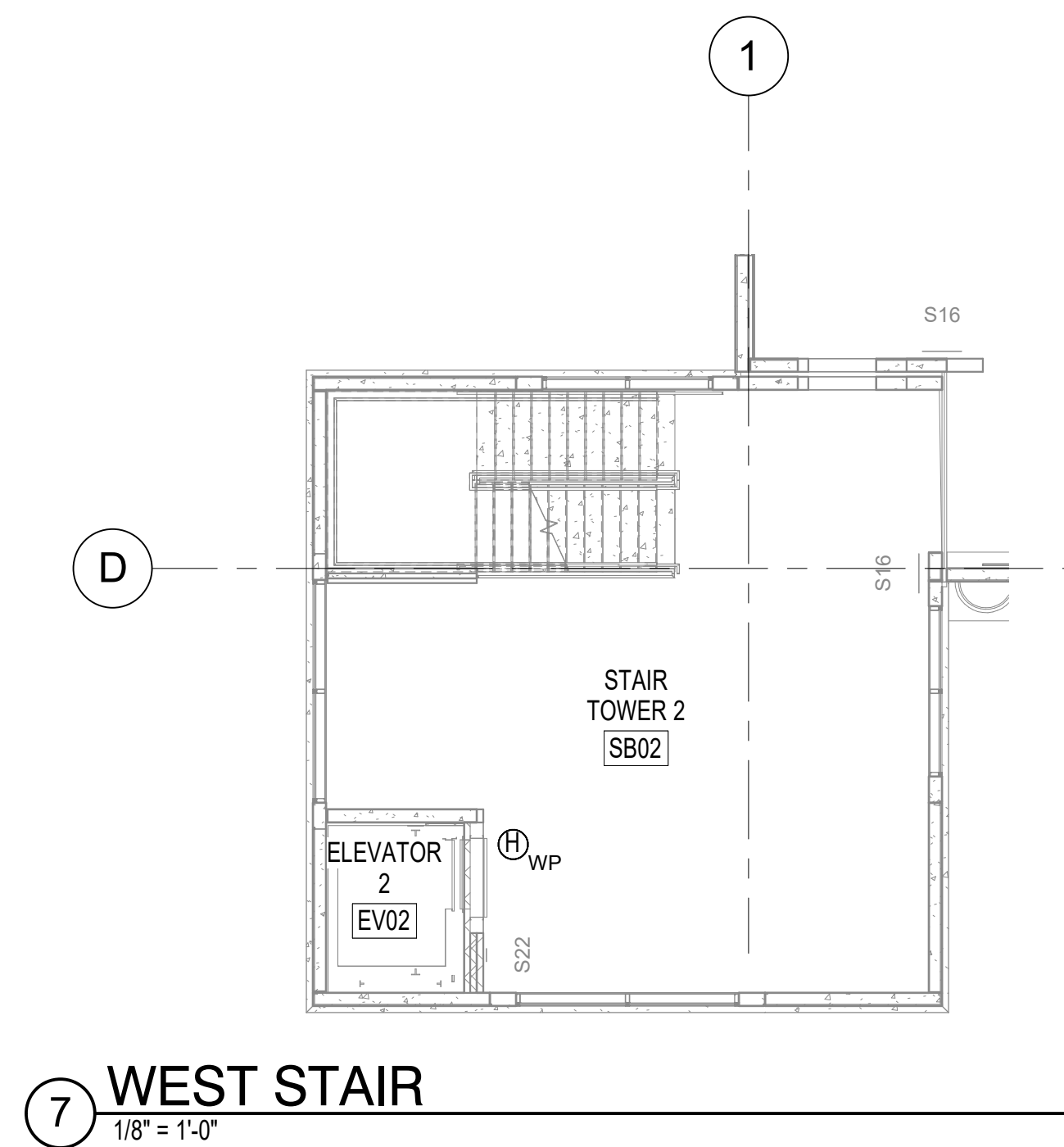
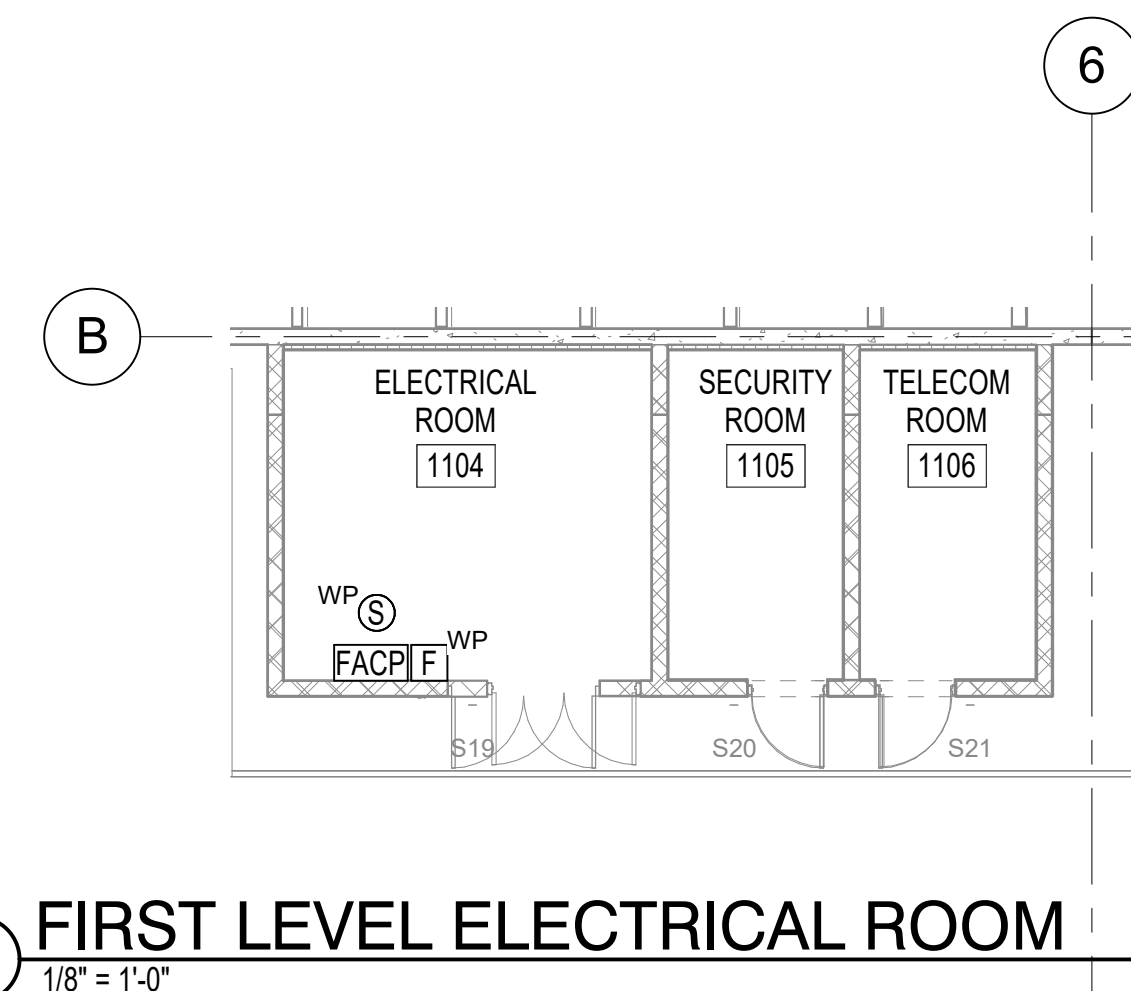
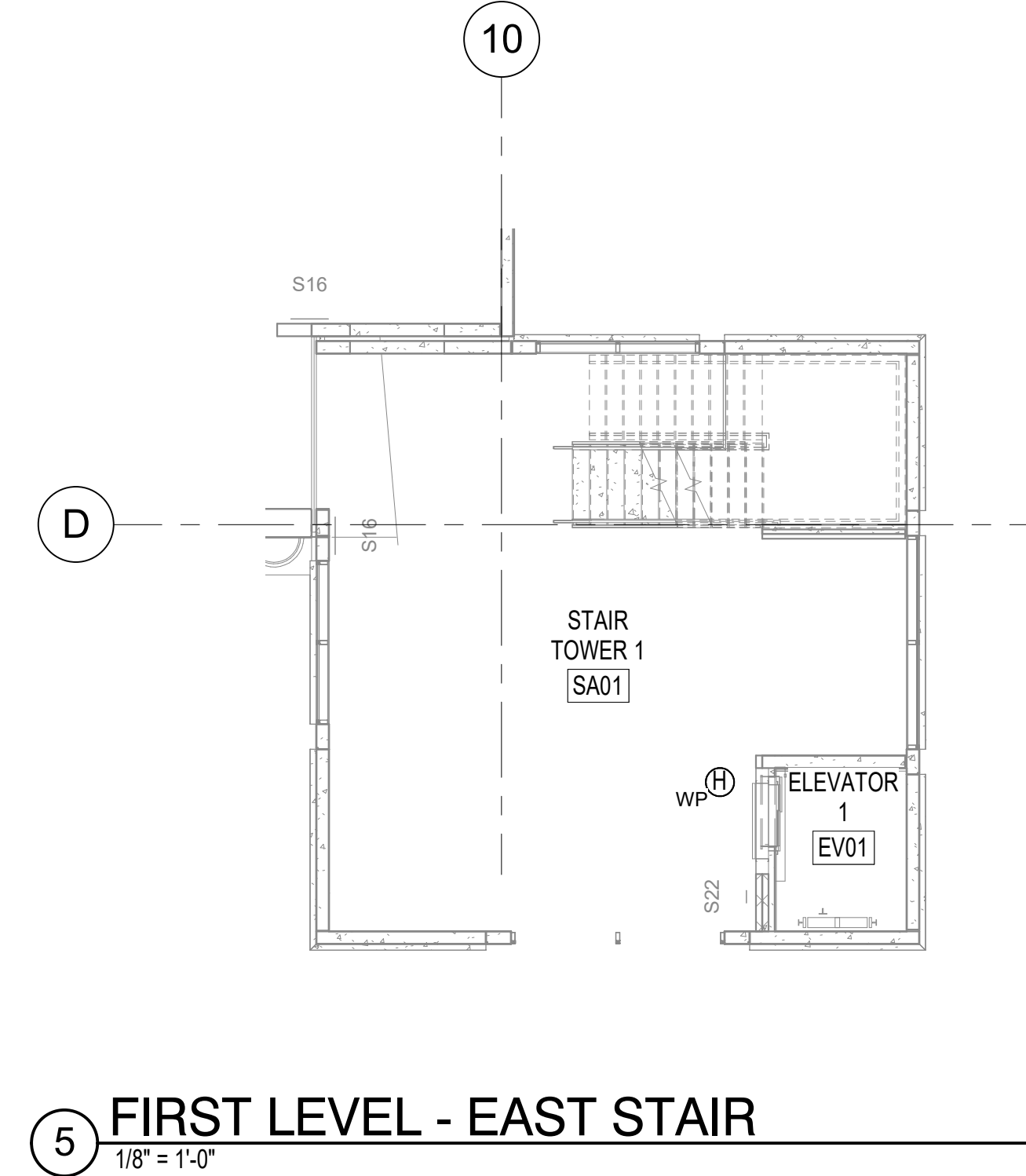
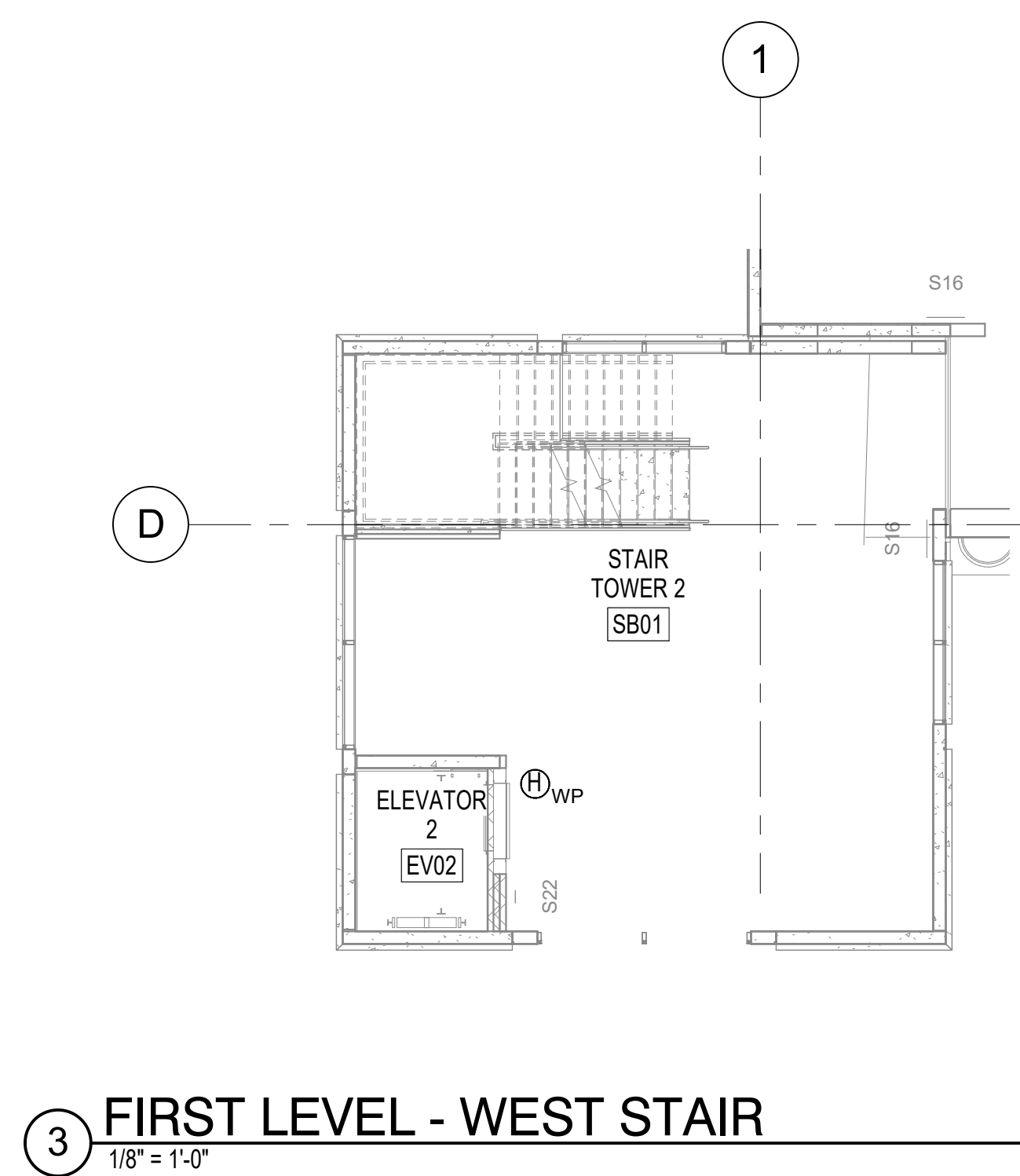
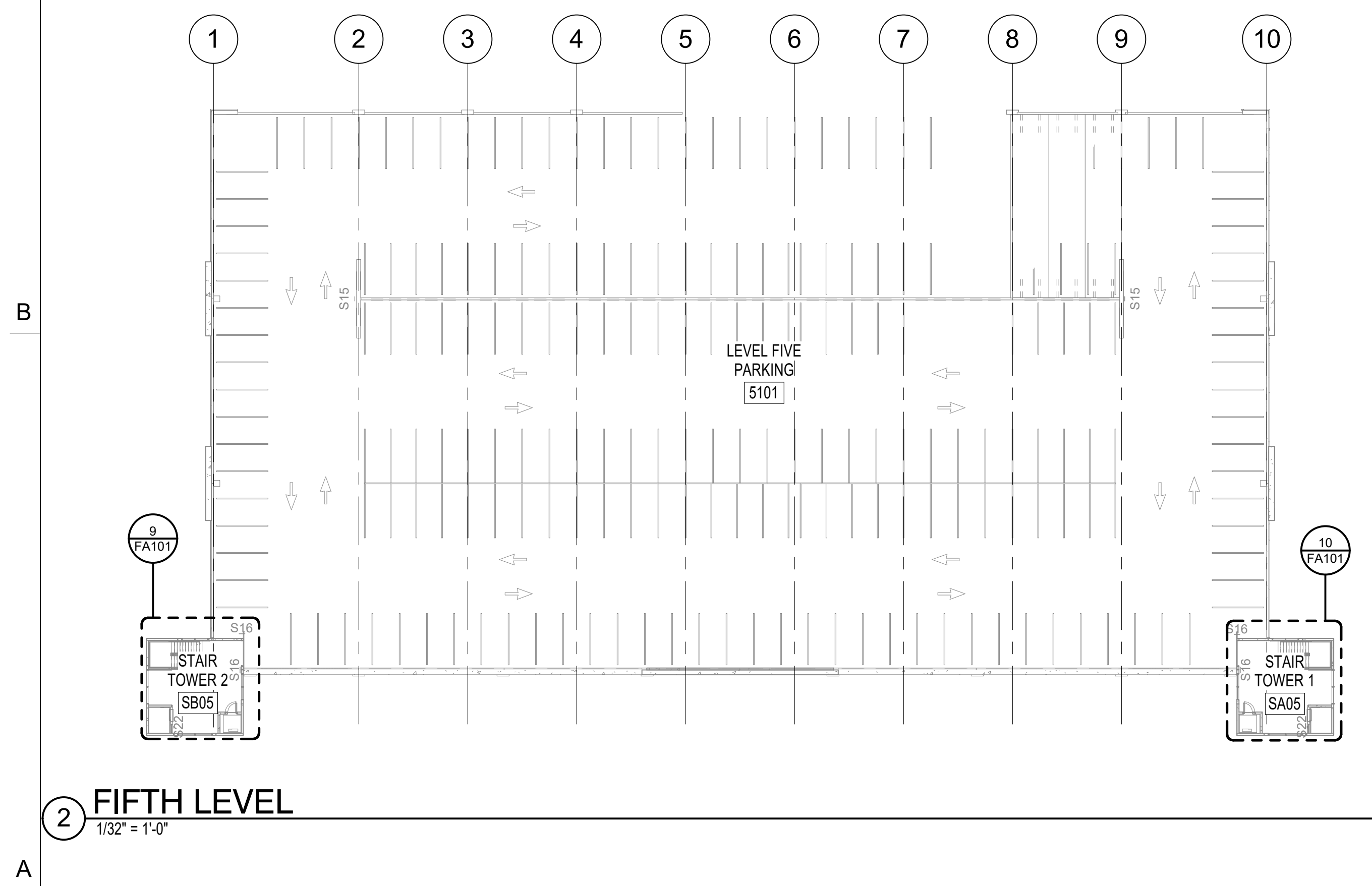
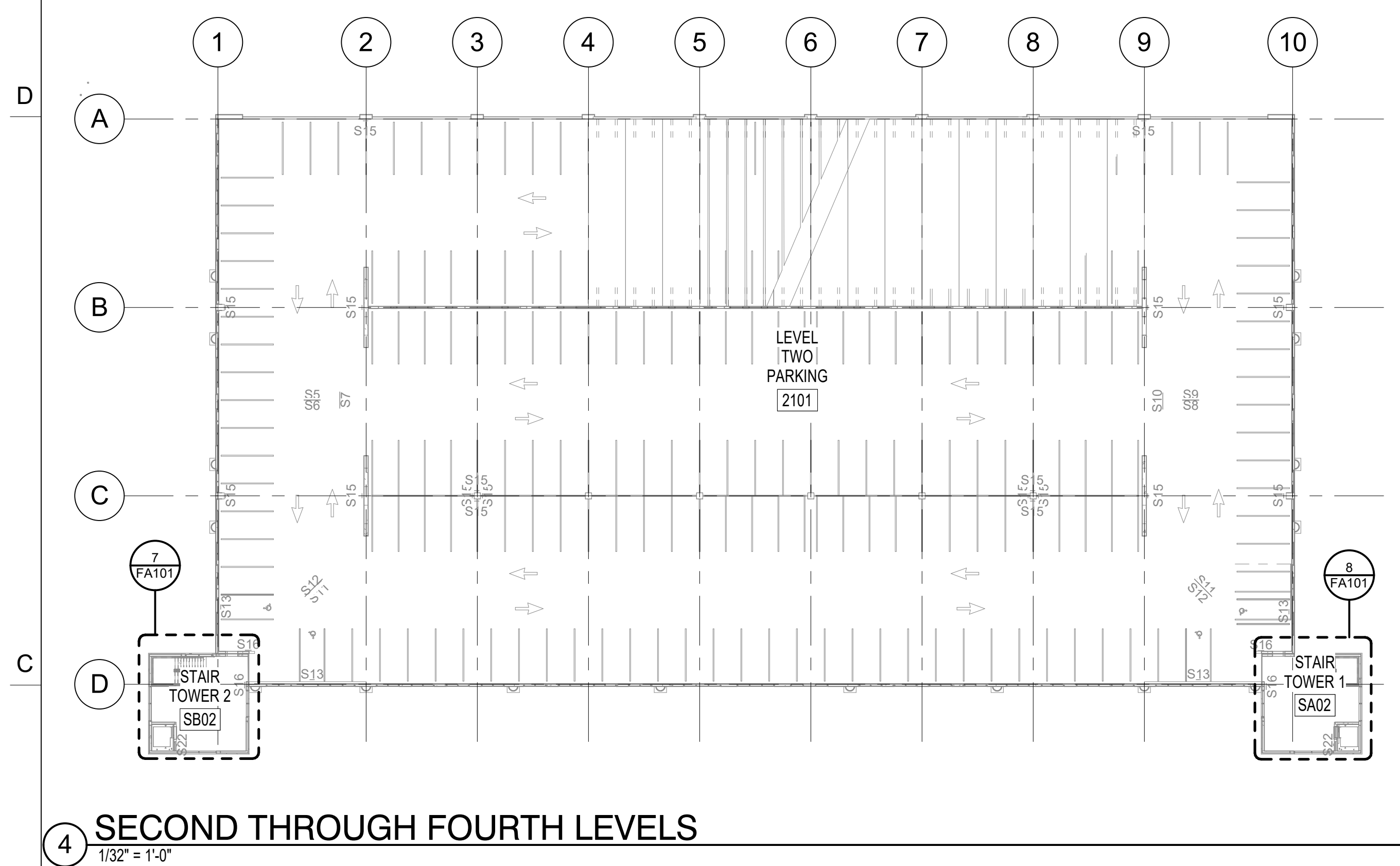
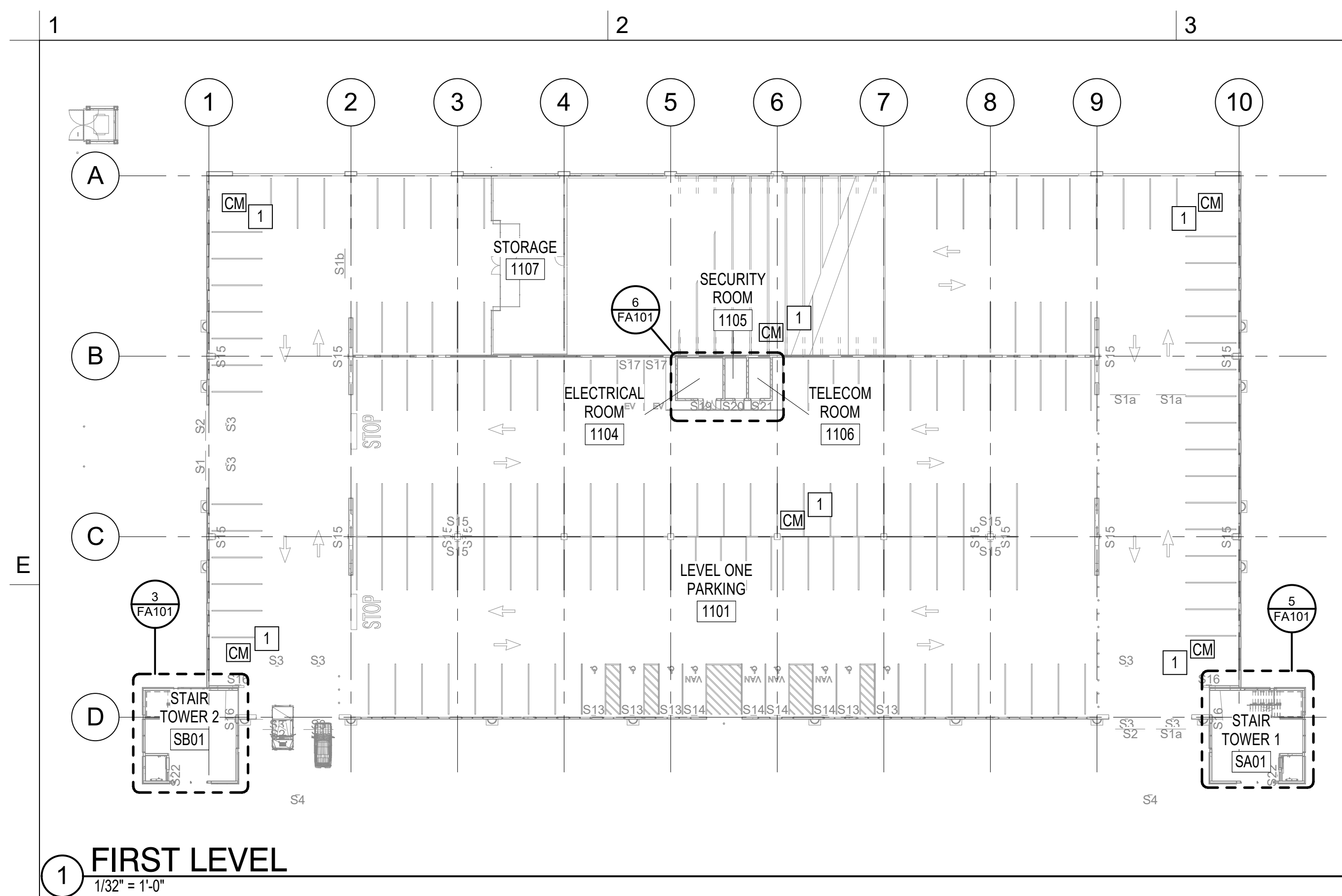
FA001

DESIGN: Designer

DRAWN: Author

REVIEW: Checker

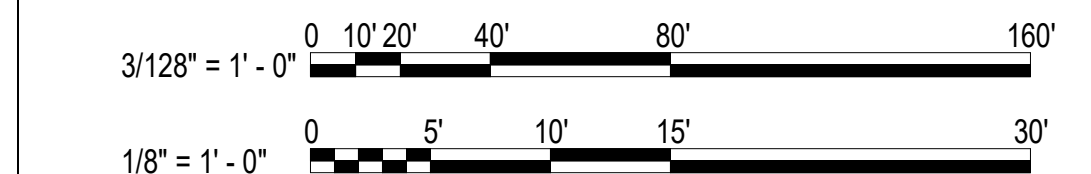
CN 8112



KEY NOTES

1. CONTACT MONITOR MODULE FOR STANDPIPE ISOLATION VALVE TAMPER SWITCH MONITORING. SEE FP SERIES SHEETS FOR COORDINATION.

GRAPHIC SCALE(S)



SCO ID NUMBER: 18-19226-01A
CODE: 41828
ITEM: 301

CONTRACTOR
Balfour Beatty
Construction

DESIGNER

CLARK NEXSEN
1523 ELIZABETH AVENUE, SUITE 300
CHARLOTTE, NORTH CAROLINA 28204
704-377-8800

CLARK NEXSEN LICENSE NUMBER: C-1028



WALKER
CONSULTANTS

13860 Ballantyne Corporate Place
Suite 140
Charlotte, NC 28277
T: 704.247.6230
www.walkerconsultants.com
NC License No. F-0518



McKIM & CREED

CIVIL ENGINEER
243 NORTH FRONT STREET
WILMINGTON, NORTH CAROLINA
28401
910.343.1048

PROFESSIONAL SEAL



NC CORPORATE ENGINEERING LICENSE #C-1028

SUBMITTAL

04/15/2019

CONSTRUCTION DOCUMENT
SUBMITTAL 01

REVISIONS

KEY PLAN

SHEET

FIRE ALARM FLOOR PLANS

FA101

DESIGN: Designer
DRAWN: Author
REVIEW: Checker

CN 8112